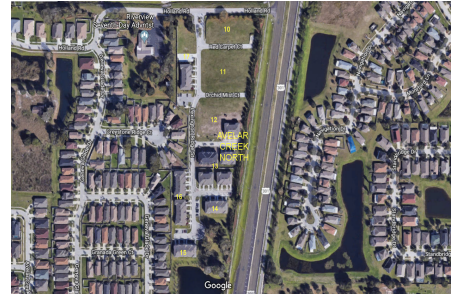


Avelar Creek North

12611-12760 Lexington Ridge St, Riverview, FL, Hillsborough 33578

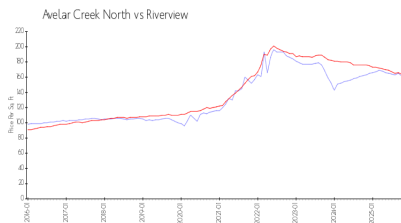
Building Information

Number of units: 105
Number of active listings for rent: 2
Number of active listings for sale: 0
Building inventory for sale:
Number of sales over the last 12 months: 0%
Number of sales over the last 6 months: 3
Number of sales over the last 3 months: 1
Avelar Creek North Homeowners
The Melrose Management Partnership
3527 Palm Harbor Blvd
Palm Harbor, FL 34683
727-787-3461 (phone)
727-787-3423 (fax)
<https://melrosecorporation.com/avelar-creek-north/>

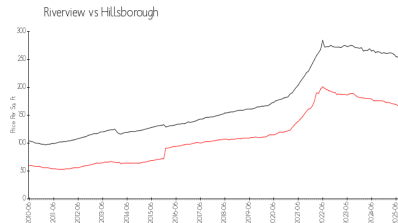


Built in 2016 - 105 units - 2 floors

Market Information



Avelar Creek North: \$159/sq. ft.
Riverview: \$162/sq. ft.



Riverview: \$162/sq. ft.
Hillsborough: \$229/sq. ft.

Inventory for Sale

Avelar Creek North
Riverview
0%%

Hillsborough

Avg. Time to Close Over Last 12 Months

Avelar Creek North 49 days
Riverview 70 days
Hillsborough 89 days