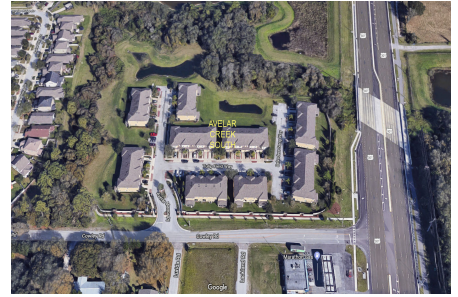


Avelar Creek South

10402-10424 Tulip Field Wy, Riverview, FL, Hillsborough 33578

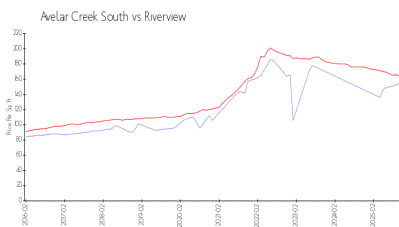
Building Information

Number of units: 48
Number of active listings for rent: 1
Number of active listings for sale: 3
Building inventory for sale: 6%
Number of sales over the last 12 months: 3
Number of sales over the last 6 months: 1
Number of sales over the last 3 months: 0
Avelar Creek South Homeowners
The Melrose Management Partnership
3527 Palm Harbor Blvd
Palm Harbor, FL 34683
727-787-3461 (phone)
<https://melrosecorporation.com/avelar-creek-south/>

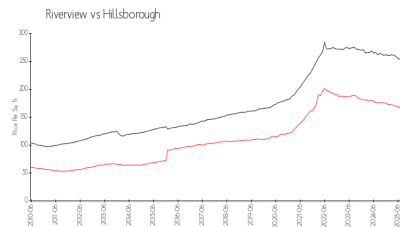


Built in 2012 - 48 units - 2 floors

Market Information



Avelar Creek South: \$156/sq. ft.
Riverview: \$162/sq. ft.



Riverview: \$162/sq. ft.
Hillsborough: \$229/sq. ft.

Inventory for Sale

Avelar Creek South 6%
Riverview 4%
Hillsborough 5%

Avg. Time to Close Over Last 12 Months

Avelar Creek South 169 days
Riverview 70 days
Hillsborough 89 days