

Meadowlark Manor

1809-1949 S Pebble Beach Blvd, Sun City Center, FL, Hillsborough 33573

Building Information

Number of units: 28
Number of active listings for rent: 0
Number of active listings for sale: 0
Building inventory for sale:
Number of sales over the last 12 months: 0%
Number of sales over the last 6 months: 0
Number of sales over the last 3 months: 0

Sun City Center Community Association

1009 North Pebble Beach Blv

Sun City Center

Ph: 813-633-3500

URL: <http://www.suncitycenter.org/association.html>

Kings Point Community

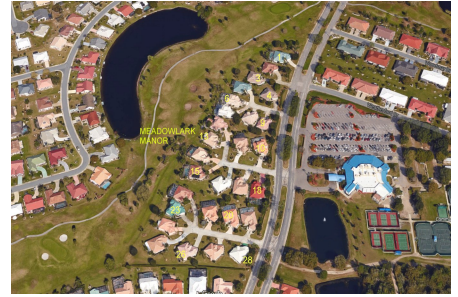
1904 Clubhouse Dr

Sun City Center

Ph: 813-642-8790

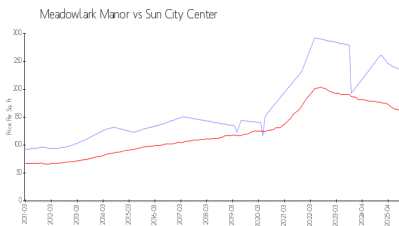
URL: <http://kpscc.com/>

<https://>

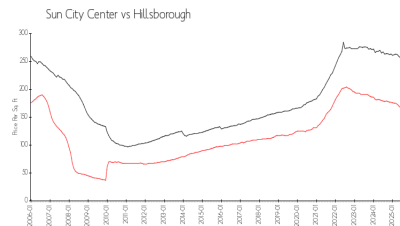


Built in 1999 - 28 units - 1 floor

Market Information



Meadowlark Manor: \$232/sq. ft.
Sun City Center: \$158/sq. ft.



Sun City Center: \$158/sq. ft.
Hillsborough: \$229/sq. ft.

Inventory for Sale

Meadowlark Manor

Sun City Center

0%%

Hillsborough

Avg. Time to Close Over Last 12 Months

Meadowlark Manor 41 days
Sun City Center 108 days
Hillsborough 89 days