

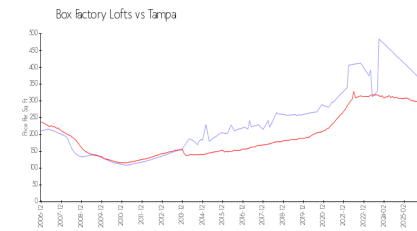
Box Factory Lofts

2001 2 E Ave, Tampa, FL, Hillsborough 33605

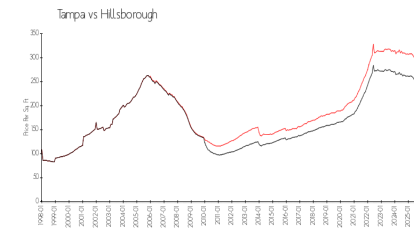
Building Information

Number of units:	53
Number of active listings for rent:	0
Number of active listings for sale:	5
Building inventory for sale:	9%
Number of sales over the last 12 months:	1
Number of sales over the last 6 months:	1
Number of sales over the last 3 months:	0

Market Information



Box Factory Lofts: \$364/sq. ft.
Tampa: \$295/sq. ft.



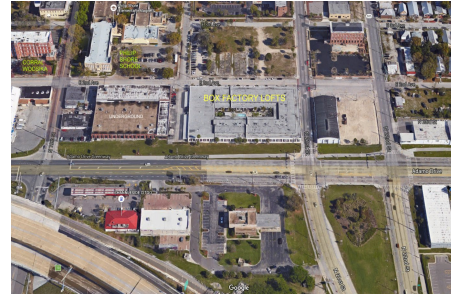
Tampa: \$295/sq. ft.
Hillsborough: \$229/sq. ft.

Inventory for Sale

Box Factory Lofts	9%
Tampa	5%
Hillsborough	5%

Avg. Time to Close Over Last 12 Months

Box Factory Lofts	75 days
Tampa	86 days
Hillsborough	89 days



Built in 2006 - 53 units - 2 floors