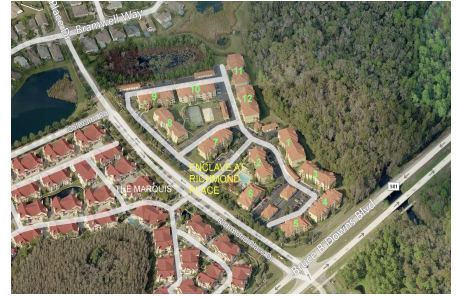


Enclave at Richmond Place

18001 Richmond Place Dr, Tampa, FL, Hillsborough 33647

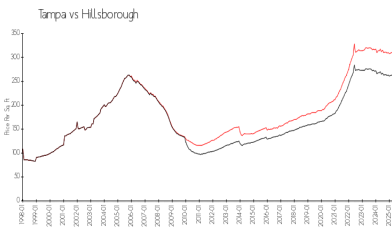
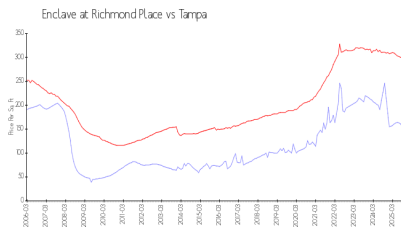
Building Information

Number of units: 280
 Number of active listings for rent: 5
 Number of active listings for sale: 26
 Building inventory for sale: 9%
 Number of sales over the last 12 months: 8
 Number of sales over the last 6 months: 6
 Number of sales over the last 3 months: 1
THE ENCLAVE AT RICHMOND PLACE
 Property Management company
 University Properties Inc
 7001 Temple Terrace Hwy
 Tampa, FL 33637-5734
 (813) 980-1000
<https://www.richmondplacetampa.com/>



Built in 2000 - 280 units - 3 floors

Market Information



Enclave at Richmond Place: \$150/sq. ft.
 Tampa: \$296/sq. ft.

Tampa: \$296/sq. ft.
 Hillsborough: \$229/sq. ft.

Inventory for Sale

Enclave at Richmond Place: 9%
 Tampa: 5%
 Hillsborough: 5%

Avg. Time to Close Over Last 12 Months

Enclave at Richmond Place: 114 days
 Tampa: 86 days
 Hillsborough: 89 days