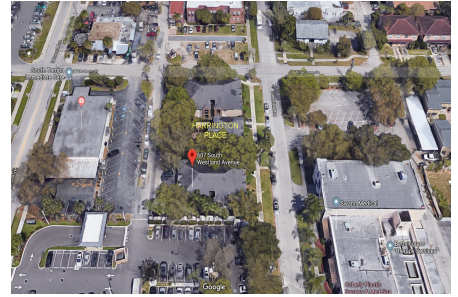


# Harrington Place

607 S Westland Ave, Tampa, FL, Hillsborough 33606

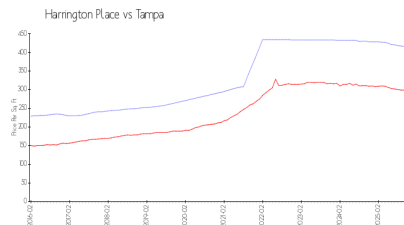
## Building Information

Number of units: 20  
Number of active listings for rent: 0  
Number of active listings for sale: 0  
Building inventory for sale:  
Number of sales over the last 12 months: 0%  
Number of sales over the last 6 months: 0  
Number of sales over the last 3 months: 0  
Harrington Place Condominium Association  
1207 North Himes Avenue # 3  
Tampa, FL 33607  
Phone: (727) 446-5721  
<https://>

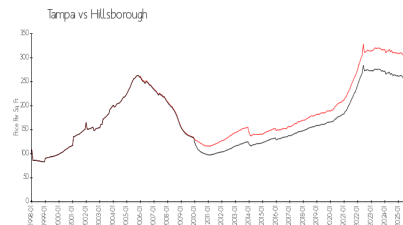


Built in 1988 - 20 units - 2 floors

## Market Information



Harrington Place: \$413/sq. ft.  
Tampa: \$296/sq. ft.



Tampa: \$296/sq. ft.  
Hillsborough: \$229/sq. ft.

## Inventory for Sale

Harrington Place  
Tampa  
0%%

Hillsborough

## Avg. Time to Close Over Last 12 Months

Harrington Place 9 days  
Tampa 86 days  
Hillsborough 89 days