

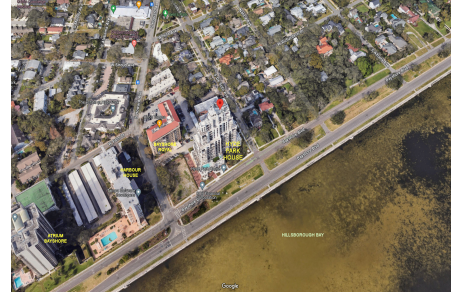
Hyde Park House

2103 Bayshore Blvd, Tampa, FL, Hillsborough 33606

Building Information

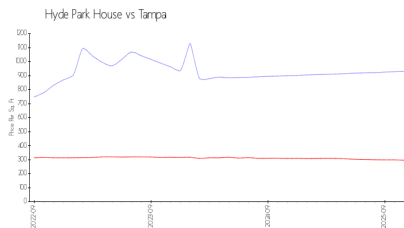
Number of units:	70
Number of active listings for rent:	0
Number of active listings for sale:	3
Building inventory for sale:	4%
Number of sales over the last 12 months:	0
Number of sales over the last 6 months:	0
Number of sales over the last 3 months:	0

Hyde Park House
Address: 2103 Bayshore Blvd,
Tampa, FL 33606,
Phone: +1 813-861-2760
<https://>

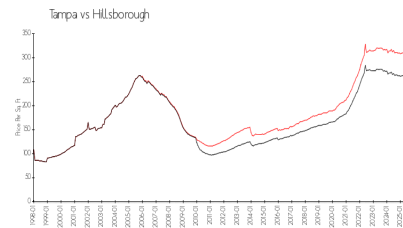


Built in 2022 - 70 units - 22 floors

Market Information



Hyde Park House: \$930/sq. ft.
Tampa: \$296/sq. ft.



Tampa: \$296/sq. ft.
Hillsborough: \$229/sq. ft.

Inventory for Sale

Hyde Park House	4%
Tampa	5%
Hillsborough	5%

Avg. Time to Close Over Last 12 Months

Hyde Park House	7 days
Tampa	86 days
Hillsborough	89 days