

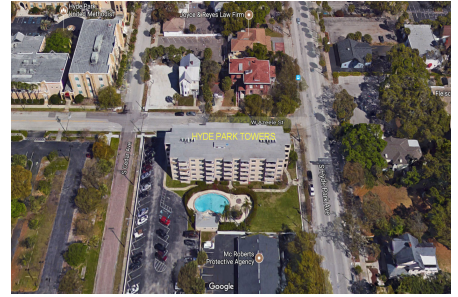
# Hyde Park Towers

406 W Azeele St, Tampa, FL, Hillsborough 33606

## Building Information

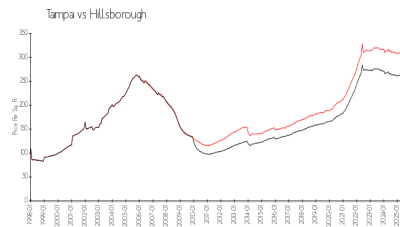
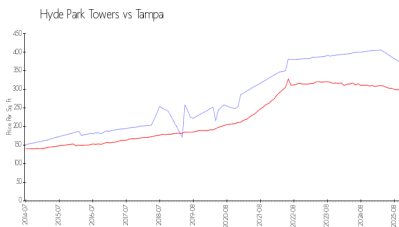
Number of units:	40
Number of active listings for rent:	1
Number of active listings for sale:	3
Building inventory for sale:	7%
Number of sales over the last 12 months:	1
Number of sales over the last 6 months:	0
Number of sales over the last 3 months:	0

HYDE PARK TOWERS  
CONDOMINIUM ASSOCIATION, INC.  
C/O Condominium Associates  
777 S Harbour Island Blvd, Suite 270  
Tampa, FL 33602  
(813) 209-9300  
<https://>



Built in 1963 - 40 units - 5 floors

## Market Information



Hyde Park Towers: \$368/sq. ft.  
Tampa: \$296/sq. ft.

Tampa: \$296/sq. ft.  
Hillsborough: \$229/sq. ft.

## Inventory for Sale

Hyde Park Towers	7%
Tampa	5%
Hillsborough	5%

## Avg. Time to Close Over Last 12 Months

Hyde Park Towers	42 days
Tampa	86 days
Hillsborough	89 days