

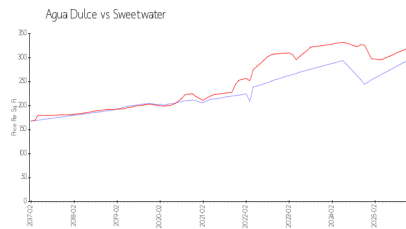
Agua Dulce

11005 SW 1 St, Sweetwater, FL, Miami-Dade 33174

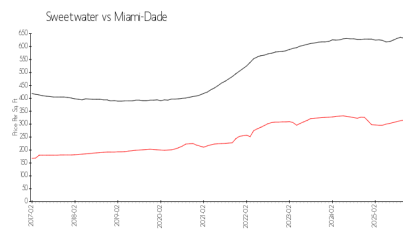
Building Information

Number of units:	63
Number of active listings for rent:	3
Number of active listings for sale:	4
Building inventory for sale:	6%
Number of sales over the last 12 months:	0
Number of sales over the last 6 months:	0
Number of sales over the last 3 months:	0

Market Information



Agua Dulce: \$294/sq. ft.
Sweetwater: \$320/sq. ft.



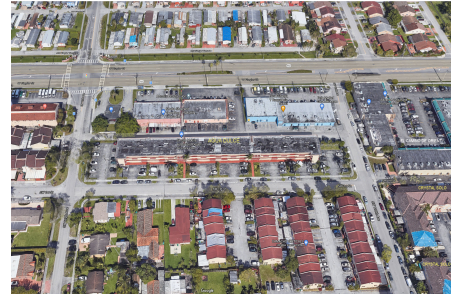
Sweetwater: \$320/sq. ft.
Miami-Dade: \$668/sq. ft.

Inventory for Sale

Agua Dulce	6%
Sweetwater	2%
Miami-Dade	4%

Avg. Time to Close Over Last 12 Months

Agua Dulce	65 days
Sweetwater	62 days
Miami-Dade	77 days



Built in 1968 - 63 units - 3 floors