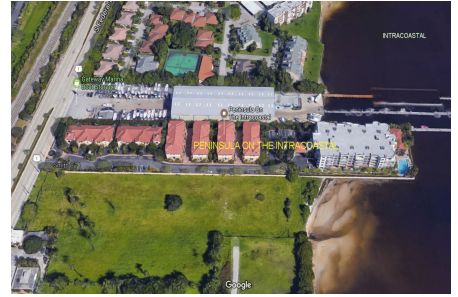


Peninsula on the Intracoastal

2670-2700 N Federal Hwy, Boynton Beach, FL, Palm Beach 33435

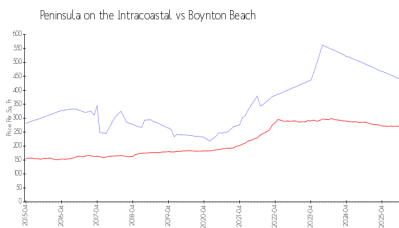
Building Information

Number of units:	70
Number of active listings for rent:	0
Number of active listings for sale:	2
Building inventory for sale:	2%
Number of sales over the last 12 months:	4
Number of sales over the last 6 months:	1
Number of sales over the last 3 months:	0
Peninsula on the Intracoastal	
561-740-3400	
https://peninsulaboynton.com/	

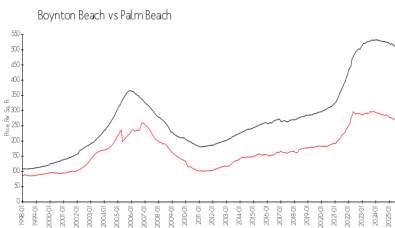


Built in 2011 - 70 units - 5 floors

Market Information



Peninsula on the Intracoastal: \$436/sq. ft.
Boynton Beach: \$275/sq. ft.



Boynton Beach: \$275/sq. ft.
Palm Beach: \$453/sq. ft.

Inventory for Sale

Peninsula on the Intracoastal	2%
Boynton Beach	3%
Palm Beach	3%

Avg. Time to Close Over Last 12 Months

Peninsula on the Intracoastal	50 days
Boynton Beach	65 days
Palm Beach	77 days