

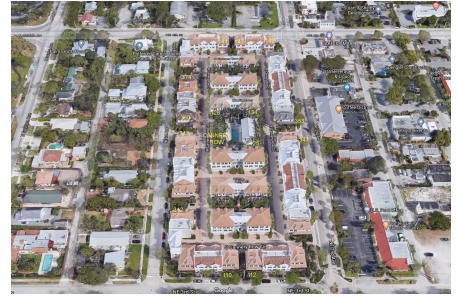
Cannery Row

304-388 W Cannery Row Cir, Delray Beach, FL, Palm Beach 33444

Building Information

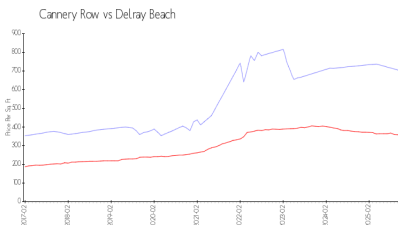
Number of units:	82
Number of active listings for rent:	0
Number of active listings for sale:	2
Building inventory for sale:	2%
Number of sales over the last 12 months:	3
Number of sales over the last 6 months:	1
Number of sales over the last 3 months:	1

Cannery Row LLC
1118 Waterway Lane
Delray Beach, FL 33483
(561) 279-8952
<https://>

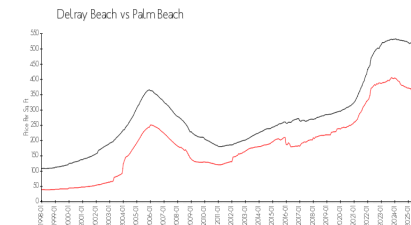


Built in 2010/2016 - 82 units - 3 floors

Market Information



Cannery Row: \$700/sq. ft.
Delray Beach: \$346/sq. ft.



Delray Beach: \$346/sq. ft.
Palm Beach: \$453/sq. ft.

Inventory for Sale

Cannery Row	2%
Delray Beach	3%
Palm Beach	3%

Avg. Time to Close Over Last 12 Months

Cannery Row	27 days
Delray Beach	76 days
Palm Beach	77 days