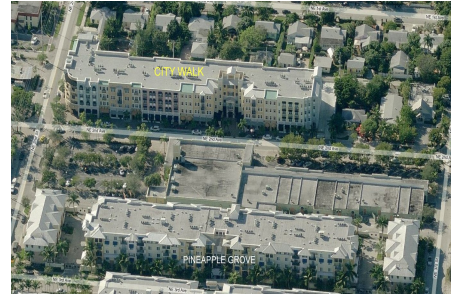


City Walk Pineapple Grove

200 NE 2 Av, Delray Beach, FL, Palm Beach 33444

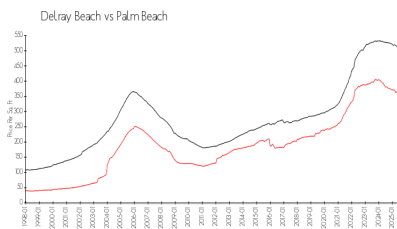
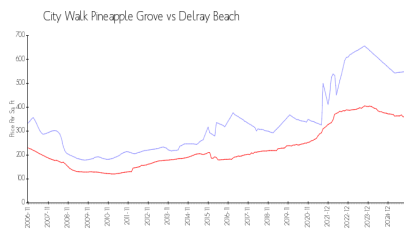
Building Information

Number of units: 40
Number of active listings for rent: 2
Number of active listings for sale: 4
Building inventory for sale: 10%
Number of sales over the last 12 months: 5
Number of sales over the last 6 months: 3
Number of sales over the last 3 months: 2
City Walk At Pineapple Grove
200 NE 2nd Ave, Delray Beach, FL 33444
(561) 266-5970
<https://>



Built in 2006 - 40 units - 4 floors

Market Information



City Walk Pineapple Grove: \$550/sq. ft.
Delray Beach: \$346/sq. ft.

Delray Beach: \$346/sq. ft.
Palm Beach: \$453/sq. ft.

Inventory for Sale

City Walk Pineapple Grove: 10%
Delray Beach: 3%
Palm Beach: 3%

Avg. Time to Close Over Last 12 Months

City Walk Pineapple Grove: 87 days
Delray Beach: 76 days
Palm Beach: 77 days