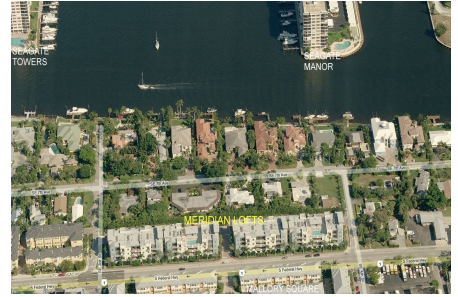


Meridian

335 SE 6 Av, Delray Beach, FL, Palm Beach 33483

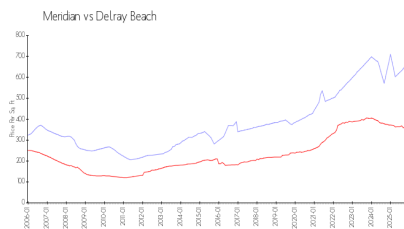
Building Information

Number of units: 59
Number of active listings for rent: 1
Number of active listings for sale: 1
Building inventory for sale: 1%
Number of sales over the last 12 months: 7
Number of sales over the last 6 months: 3
Number of sales over the last 3 months: 2
Meridian Delray Condominium Association, Inc
3082 S Jog Road, Greenacres, FL33467
(561) 278-4666
<https://>

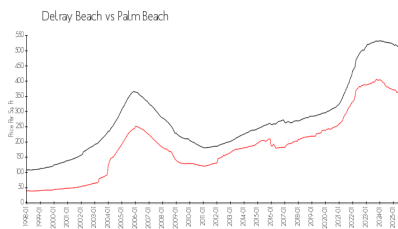


Built in 2006 - 59 units - 4 floors

Market Information



Meridian: \$655/sq. ft.
Delray Beach: \$346/sq. ft.



Delray Beach: \$346/sq. ft.
Palm Beach: \$453/sq. ft.

Inventory for Sale

Meridian 1%
Delray Beach 3%
Palm Beach 3%

Avg. Time to Close Over Last 12 Months

Meridian 56 days
Delray Beach 76 days
Palm Beach 77 days