

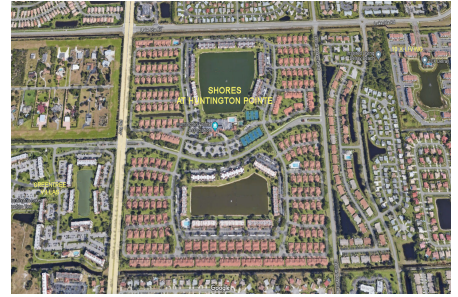
# Shores at Huntington Pointe

5015-6160 Waldwick Cir, Delray Beach, FL, Palm Beach 33484

## Building Information

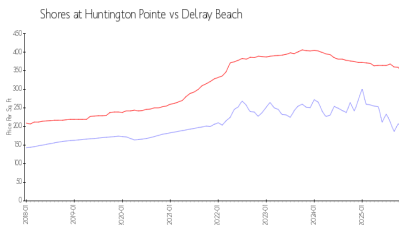
Number of units:	520
Number of active listings for rent:	1
Number of active listings for sale:	19
Building inventory for sale:	3%
Number of sales over the last 12 months:	26
Number of sales over the last 6 months:	12
Number of sales over the last 3 months:	7

Huntington Pointe  
Association Inc  
6251 North Oriole Boulevard  
Delray Beach, FL 33484  
(561) 496-3801  
<https://huntingtonpointe.net/>

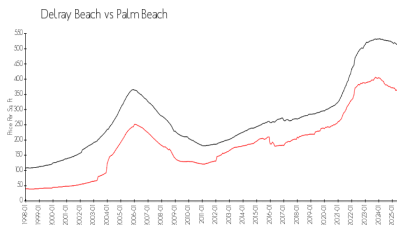


Built in 1989/1992 - 520 units 1 floor

## Market Information



Shores at Huntington Pointe: \$200/sq. ft.  
Delray Beach: \$346/sq. ft.



Delray Beach: \$346/sq. ft.  
Palm Beach: \$453/sq. ft.

## Inventory for Sale

Shores at Huntington Pointe	3%
Delray Beach	3%
Palm Beach	3%

## Avg. Time to Close Over Last 12 Months

Shores at Huntington Pointe	54 days
Delray Beach	76 days
Palm Beach	77 days