

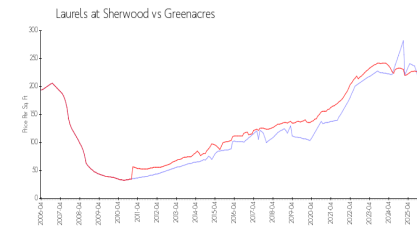
Laurels at Sherwood

6011 10 Ave N, Greenacres, FL, Palm Beach 33463

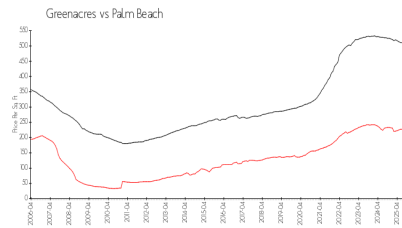
Building Information

Number of units:	96
Number of active listings for rent:	3
Number of active listings for sale:	4
Building inventory for sale:	4%
Number of sales over the last 12 months:	6
Number of sales over the last 6 months:	2
Number of sales over the last 3 months:	0

Market Information



Laurels at Sherwood: \$209/sq. ft.
Greenacres: \$222/sq. ft.



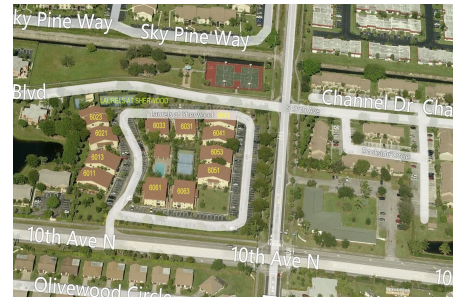
Greenacres: \$222/sq. ft.
Palm Beach: \$453/sq. ft.

Inventory for Sale

Laurels at Sherwood	4%
Greenacres	1%
Palm Beach	3%

Avg. Time to Close Over Last 12 Months

Laurels at Sherwood	50 days
Greenacres	43 days
Palm Beach	77 days



Built in 1985 - 96 units - 2 floors