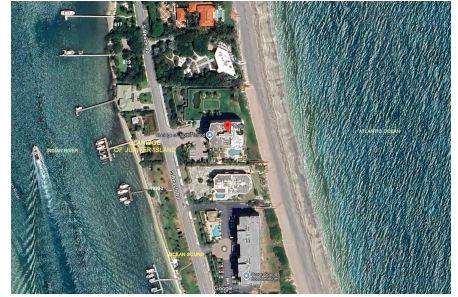


Claridge of Jupiter Island

19950 Beach Rd, Jupiter, FL, Palm Beach 1994

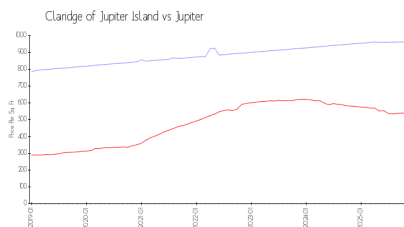
Building Information

Number of units: 16
Number of active listings for rent: 0
Number of active listings for sale: 0
Building inventory for sale:
Number of sales over the last 12 months: 0%
Number of sales over the last 6 months: 0
Number of sales over the last 3 months: 0
Claridge of Jupiter Island
Address: 19950 S Beach Rd #1S,
Tequesta, FL 33469
Phone: +1 561-743-7244
<https://>

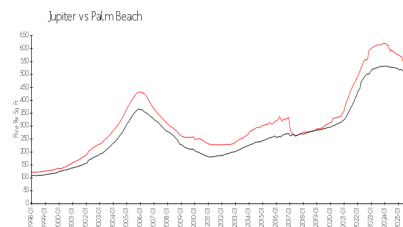


Built in 1994 - 16 units - 9 floors

Market Information



Claridge of Jupiter Island: \$963/sq. ft.
Jupiter: \$536/sq. ft.



Jupiter: \$536/sq. ft.
Palm Beach: \$453/sq. ft.

Inventory for Sale

Claridge of Jupiter Island
Jupiter
0%%

Palm Beach

Avg. Time to Close Over Last 12 Months

Claridge of Jupiter Island 32 days
Jupiter 85 days
Palm Beach 77 days