

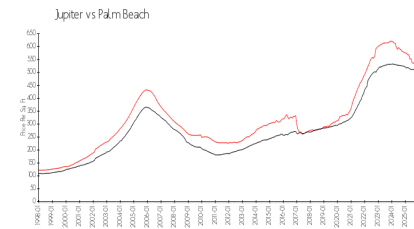
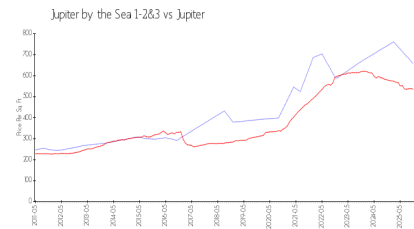
# Jupiter by the Sea 1-2&3

1660 S Hwy A1A, Jupiter, FL, Palm Beach 33477

## Building Information

Number of units:	36
Number of active listings for rent:	0
Number of active listings for sale:	2
Building inventory for sale:	5%
Number of sales over the last 12 months:	2
Number of sales over the last 6 months:	1
Number of sales over the last 3 months:	0

## Market Information



Jupiter by the Sea 1-2&3: \$657/sq. ft.

Jupiter: \$536/sq. ft.

Jupiter: \$536/sq. ft.

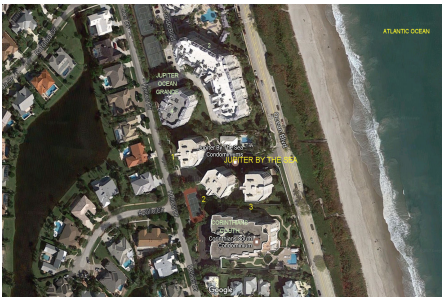
Palm Beach: \$453/sq. ft.

## Inventory for Sale

Jupiter by the Sea 1-2&3	5%
Jupiter	3%
Palm Beach	3%

## Avg. Time to Close Over Last 12 Months

Jupiter by the Sea 1-2&3	62 days
Jupiter	85 days
Palm Beach	77 days



Built in 1996 - 36 units - 6 floors