

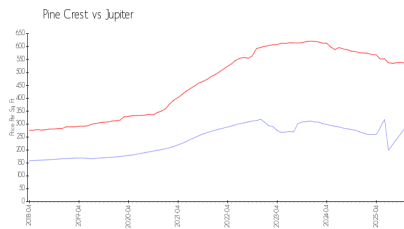
Pine Crest

101 Pinecrest Cir, Jupiter, FL, Palm Beach 33458

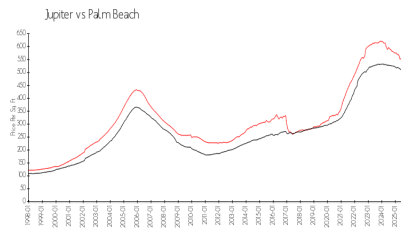
Building Information

Number of units:	180
Number of active listings for rent:	0
Number of active listings for sale:	4
Building inventory for sale:	2%
Number of sales over the last 12 months:	5
Number of sales over the last 6 months:	3
Number of sales over the last 3 months:	1

Market Information



Pine Crest: \$286/sq. ft.
Jupiter: \$536/sq. ft.



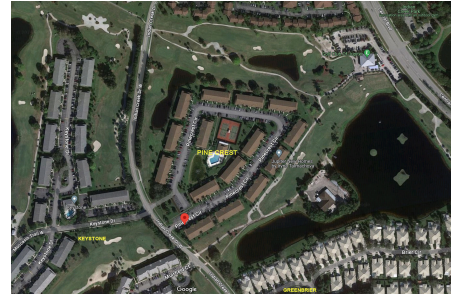
Jupiter: \$536/sq. ft.
Palm Beach: \$453/sq. ft.

Inventory for Sale

Pine Crest	2%
Jupiter	3%
Palm Beach	3%

Avg. Time to Close Over Last 12 Months

Pine Crest	70 days
Jupiter	85 days
Palm Beach	77 days



Built in 1987 - 180 units - 2 floors