

West Bay at Jonathan's Landing

3911-3971 Schooner Pointe Dr, Jupiter, FL, Palm Beach 33477

Building Information

Number of units:	130
Number of active listings for rent:	1
Number of active listings for sale:	3
Building inventory for sale:	2%
Number of sales over the last 12 months:	8
Number of sales over the last 6 months:	3
Number of sales over the last 3 months:	1

Jonathan's Landing POA

3755 Barrow Island Road

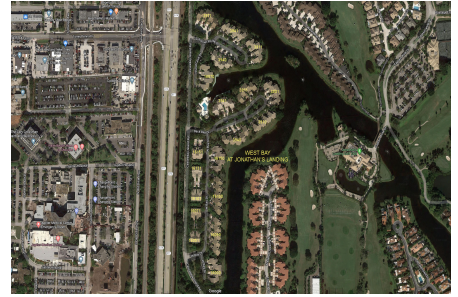
Jupiter, FL 33477

Office Phone: 561-743-2032

Fax: 561-743-2062

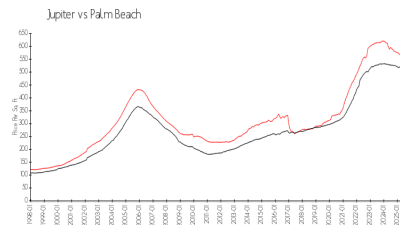
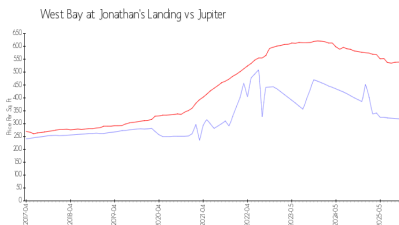
Email: admin@jlpoa.com

<https://jonathanslandingpoa.com/the-villages/west-bay>



Built in 1989/1995 - 130 units - 2 floors

Market Information



West Bay at Jonathan's Landing:	\$317/sq. ft.
Jupiter:	\$536/sq. ft.

Jupiter:	\$536/sq. ft.
Palm Beach:	\$453/sq. ft.

Inventory for Sale

West Bay at Jonathan's Landing	2%
Jupiter	3%
Palm Beach	3%

Avg. Time to Close Over Last 12 Months

West Bay at Jonathan's Landing	89 days
Jupiter	85 days
Palm Beach	77 days