

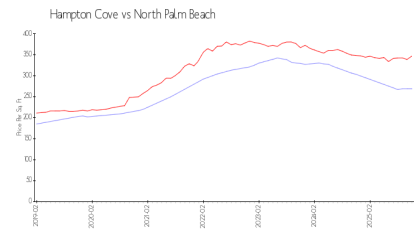
Hampton Cove

1843-1951 Juno Landing Ln, North Palm Beach, FL, Palm Beach 33408

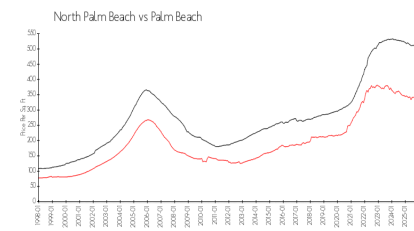
Building Information

Number of units:	32
Number of active listings for rent:	0
Number of active listings for sale:	0
Building inventory for sale:	
Number of sales over the last 12 months:	0%
Number of sales over the last 6 months:	1
Number of sales over the last 3 months:	0

Market Information



Hampton Cove: \$269/sq. ft.
North Palm Beach: \$347/sq. ft.



North Palm Beach: \$347/sq. ft.
Palm Beach: \$453/sq. ft.

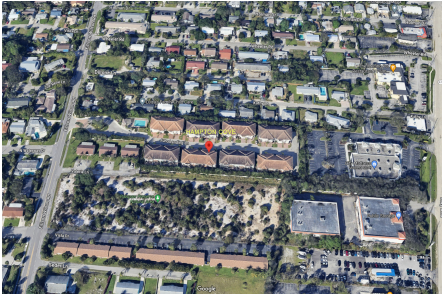
Inventory for Sale

Hampton Cove
North Palm Beach
0%%

Palm Beach

Avg. Time to Close Over Last 12 Months

Hampton Cove	128 days
North Palm Beach	97 days
Palm Beach	77 days



Built in 2018 - 32 units - 2 floors