

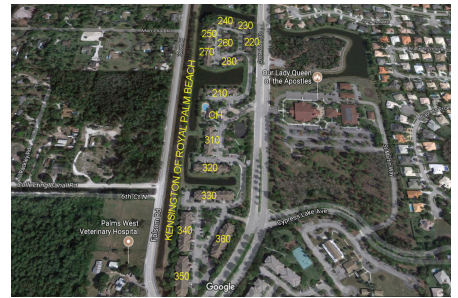
Kensington of Royal Palm Beach

210-360 Crestwood Cir, Royal Palm Beach, FL, Palm Beach 33411

Building Information

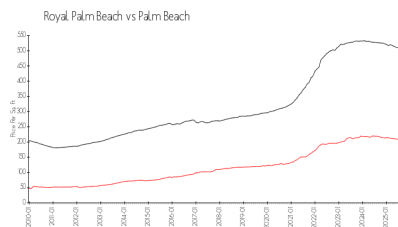
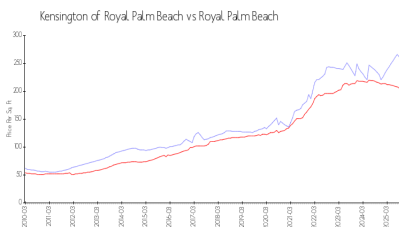
Number of units: 166
 Number of active listings for rent: 2
 Number of active listings for sale: 0
 Building inventory for sale:
 Number of sales over the last 12 months: 0%
 Number of sales over the last 6 months: 1
 Number of sales over the last 3 months: 0

Kensington of Royal Palm Beach
 c/o GRS Management Associates
 3900 Woodlake Blvd. Suite 309
 Lake Worth, FL 33463
 TEL: 561-641-8554
 FAX: 561-641-9448
<https://www.grsmgt.com/association/kensington/>



Built in 2004 - 166 units - 3 floors

Market Information



Kensington of Royal Palm Beach: \$255/sq. ft.
 Royal Palm Beach: \$201/sq. ft.

Royal Palm Beach: \$201/sq. ft.
 Palm Beach: \$453/sq. ft.

Inventory for Sale

Kensington of Royal Palm Beach
 Royal Palm Beach
 0%%

Palm Beach

Avg. Time to Close Over Last 12 Months

Kensington of Royal Palm Beach: 47 days
 Royal Palm Beach: 42 days
 Palm Beach: 77 days