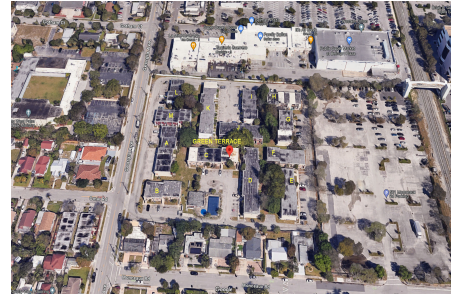


Green Terrace

2800 Georgia Ave, West Palm Beach, FL, Palm Beach 33405

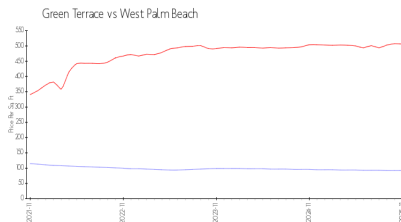
Building Information

Number of units: 84
Number of active listings for rent: 1
Number of active listings for sale: 0
Building inventory for sale:
Number of sales over the last 12 months: 0%%
Number of sales over the last 6 months: 1
Number of sales over the last 3 months: 0
Green Terrace Condominium Association
2800 Georgia Avenue
West Palm Beach, FL 33405
(561) 615-0123
<https://>

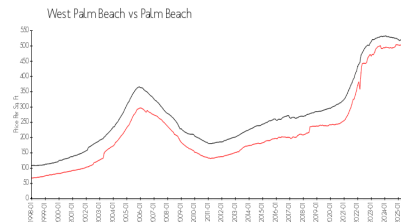


Built in 1983 - 84 units - 2 floors

Market Information



Green Terrace: \$92/sq. ft.
West Palm Beach: \$506/sq. ft.



West Palm Beach: \$506/sq. ft.
Palm Beach: \$453/sq. ft.

Inventory for Sale

Green Terrace
West Palm Beach
0%%

Palm Beach

Avg. Time to Close Over Last 12 Months

Green Terrace 72 days
West Palm Beach 69 days
Palm Beach 77 days