

# Magnolia & Annex

303-351 Flamingo Dr, West Palm Beach, FL, Palm Beach 33401

## Building Information

Number of units: 70  
Number of active listings for rent: 1  
Number of active listings for sale: 2  
Building inventory for sale: 2%  
Number of sales over the last 12 months: 4  
Number of sales over the last 6 months: 1  
Number of sales over the last 3 months: 0

Magnolia Court Homeowners Association, Inc 2328 S Congress Avenue # 1

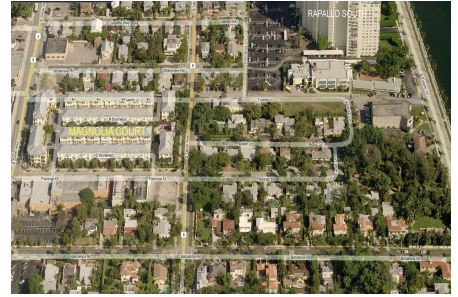
West Palm Beach, FL33406

(561) 355-4497

The Annex Condominium Association is managed by King's Management Services, Inc.

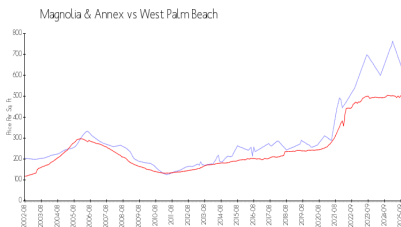
(561) 627-0480

<https://>

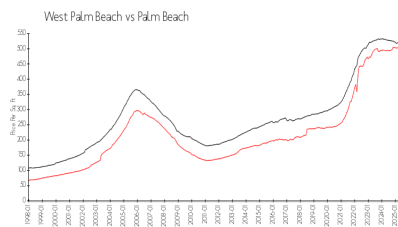


Built in 2002 - 70 units - 3 floors

## Market Information



Magnolia & Annex: \$613/sq. ft.  
West Palm Beach: \$506/sq. ft.



West Palm Beach: \$506/sq. ft.  
Palm Beach: \$453/sq. ft.

## Inventory for Sale

Magnolia & Annex 2%  
West Palm Beach 3%  
Palm Beach 3%

## Avg. Time to Close Over Last 12 Months

Magnolia & Annex 94 days  
West Palm Beach 69 days  
Palm Beach 77 days