

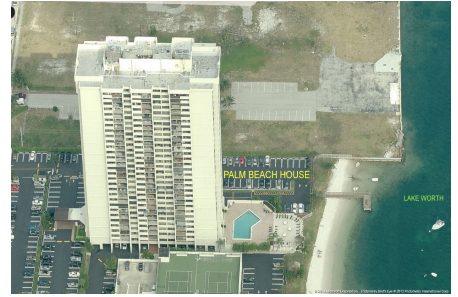
Palm Beach House

5600 N Flagler Dr, West Palm Beach, FL, Palm Beach 33407

Building Information

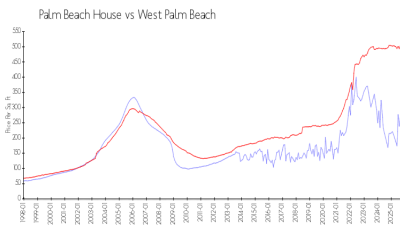
Number of units:	280
Number of active listings for rent:	10
Number of active listings for sale:	17
Building inventory for sale:	6%
Number of sales over the last 12 months:	12
Number of sales over the last 6 months:	8
Number of sales over the last 3 months:	4

Palm Beach House Condominium
Association Inc
5600 N Flagler Dr Apt 2307
West Palm Beach, FL 33407
(561) 844-8916
<https://>

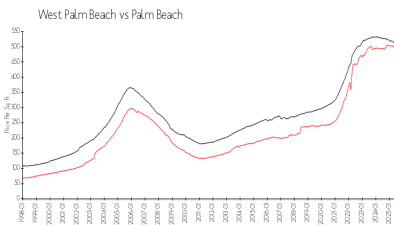


Built in 1978 - 280 units - 30 floors

Market Information



Palm Beach House: \$332/sq. ft.
West Palm Beach: \$506/sq. ft.



West Palm Beach: \$506/sq. ft.
Palm Beach: \$453/sq. ft.

Inventory for Sale

Palm Beach House	6%
West Palm Beach	3%
Palm Beach	3%

Avg. Time to Close Over Last 12 Months

Palm Beach House	110 days
West Palm Beach	69 days
Palm Beach	77 days