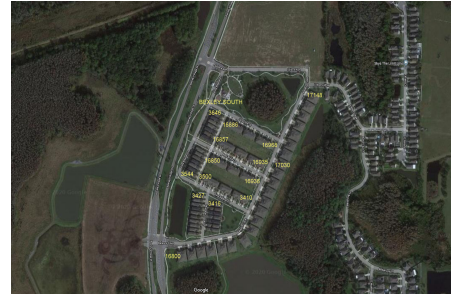


Bexley South

16885-16968 Storyline Dr, Land O Lakes, FL, Pasco 34638

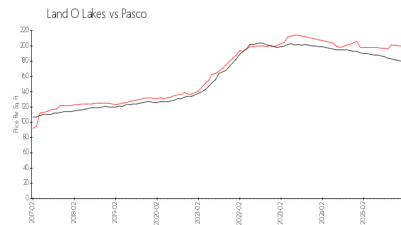
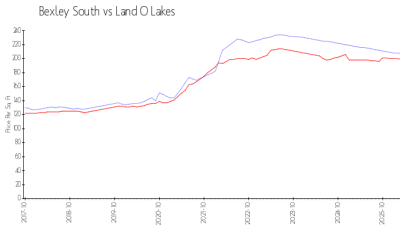
Building Information

Number of units: 139
 Number of active listings for rent: 0
 Number of active listings for sale: 1
 Building inventory for sale: 0%
 Number of sales over the last 12 months: 3
 Number of sales over the last 6 months: 2
 Number of sales over the last 3 months: 1
 Bexley by Newland
 Address: 16950 Vibrant Way,
 Land O Lakes, FL 34638
 Phone: +1 813-425-7555
<https://>



Built in 2018 - 139 units - 2 floors

Market Information



Bexley South: \$207/sq. ft.
 Land O Lakes: \$199/sq. ft.

Land O Lakes: \$199/sq. ft.
 Pasco: \$178/sq. ft.

Inventory for Sale

Bexley South 0%
 Land O Lakes 1%
 Pasco 2%

Avg. Time to Close Over Last 12 Months

Bexley South 75 days
 Land O Lakes 46 days
 Pasco 99 days