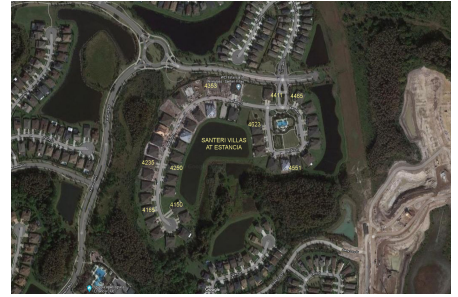


Santeri Villas at Estancia

4104-4623 Barletta Ct, Wesley Chapel, FL, Pasco 33543

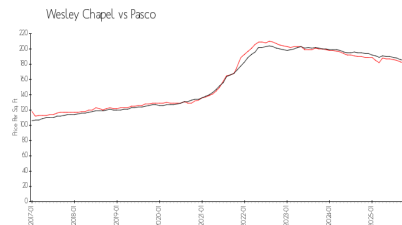
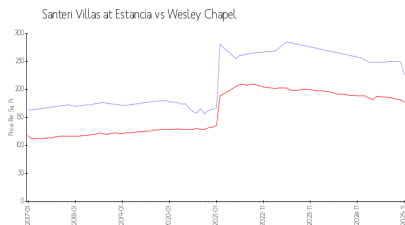
Building Information

Number of units: 96
Number of active listings for rent: 0
Number of active listings for sale: 7
Building inventory for sale: 7%
Number of sales over the last 12 months: 5
Number of sales over the last 6 months: 1
Number of sales over the last 3 months: 1
WCI at Estancia
Address: 29242 Picana Ln,
Wesley Chapel, FL 33543
Phone: +1 844-482-8335
<https://estanciawiregrasscdd.com/hoa-information>



Built in 2018 - 96 units - 2 floors

Market Information



Santeri Villas at Estancia: \$226/sq. ft.
Wesley Chapel: \$178/sq. ft.

Wesley Chapel: \$178/sq. ft.
Pasco: \$180/sq. ft.

Inventory for Sale

Santeri Villas at Estancia: 7%
Wesley Chapel: 2%
Pasco: 1%

Avg. Time to Close Over Last 12 Months

Santeri Villas at Estancia: 106 days
Wesley Chapel: 101 days
Pasco: 84 days