

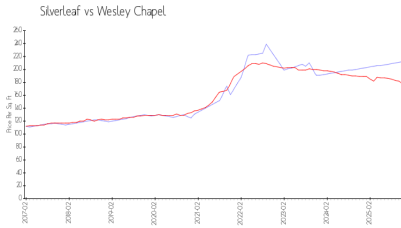
# Silverleaf

2740-2959 Birchcreek Dr, Wesley Chapel, FL, Pasco 33544

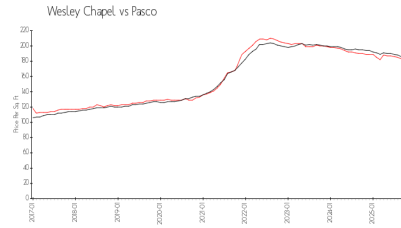
## Building Information

Number of units:	98
Number of active listings for rent:	0
Number of active listings for sale:	1
Building inventory for sale:	1%
Number of sales over the last 12 months:	1
Number of sales over the last 6 months:	0
Number of sales over the last 3 months:	0

## Market Information



Silverleaf: \$212/sq. ft.  
Wesley Chapel: \$178/sq. ft.



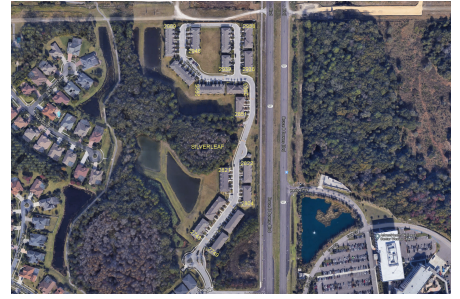
Wesley Chapel: \$178/sq. ft.  
Pasco: \$180/sq. ft.

## Inventory for Sale

Silverleaf	1%
Wesley Chapel	2%
Pasco	1%

## Avg. Time to Close Over Last 12 Months

Silverleaf	36 days
Wesley Chapel	101 days
Pasco	84 days



Built in 2007/2013 - 98 units - 2 floors