

Eiland Park Townhomes

6246-6379 Timberly Ln, Zephyrhills, FL, Pasco 33542

Building Information

Number of units:	220
Number of active listings for rent:	2
Number of active listings for sale:	4
Building inventory for sale:	1%
Number of sales over the last 12 months:	6
Number of sales over the last 6 months:	3
Number of sales over the last 3 months:	1

EILAND PARK TOWNHOMES ASSOCIATION

Rizzetta & Company

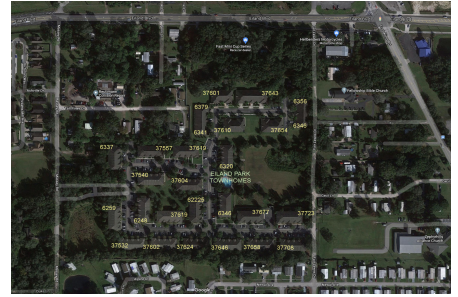
5844 Old Pasco Rd - Ste. 100

Wesley Chapel, FL 33544

Phone 813-994-1001

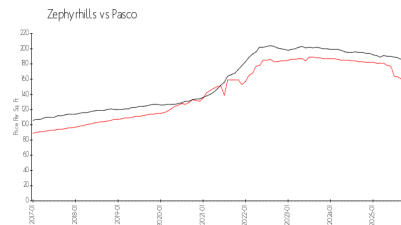
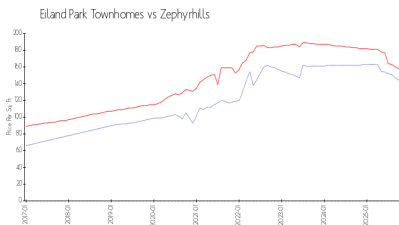
Fax: 813-994-2100

<https://www.eilandparkhoa.com/eilandpark/>



Built in 2006/2011 - 220 units - 2 floors

Market Information



Eiland Park Townhomes:	\$141/sq. ft.
Zephyrhills:	\$156/sq. ft.

Zephyrhills:	\$156/sq. ft.
Pasco:	\$180/sq. ft.

Inventory for Sale

Eiland Park Townhomes	1%
Zephyrhills	2%
Pasco	1%

Avg. Time to Close Over Last 12 Months

Eiland Park Townhomes	128 days
Zephyrhills	121 days
Pasco	84 days