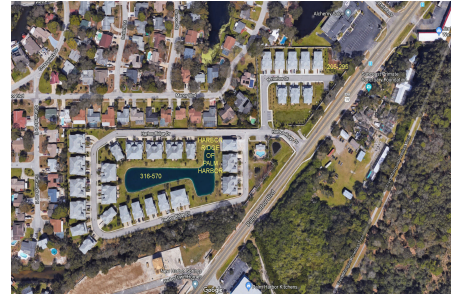


Harbor Ridge of Palm Harbor

419-533 Harbor Springs Dr, Palm Harbor, FL, Pinellas 34683

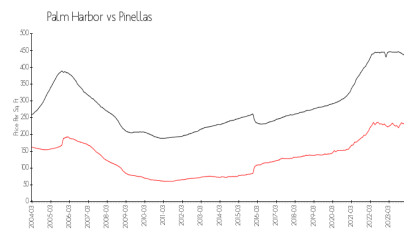
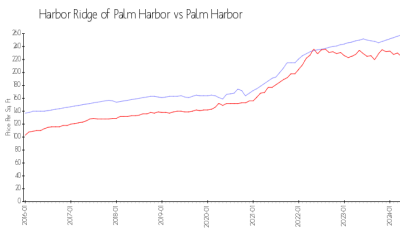
Building Information

Number of units:	84
Number of active listings for rent:	0
Number of active listings for sale:	1
Building inventory for sale:	1%
Number of sales over the last 12 months:	5
Number of sales over the last 6 months:	2
Number of sales over the last 3 months:	2



Built in 2010/2016 - 84 units - 2 floors

Market Information



Harbor Ridge of Palm Harbor: \$258/sq. ft.
 Harbor: \$225/sq. ft.
 Palm Harbor: \$225/sq. ft.

Palm Harbor: \$225/sq. ft.
 Pinellas: \$419/sq. ft.

Inventory for Sale

Harbor Ridge of Palm Harbor	1%
Palm Harbor	2%
Pinellas	3%

Avg. Time to Close Over Last 12 Months

Harbor Ridge of Palm Harbor	42 days
Palm Harbor	34 days
Pinellas	62 days