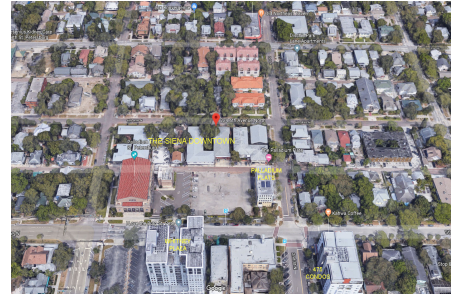


Siena Downtown

210 6 Ave N, St Petersburg, FL, Pinellas 33701

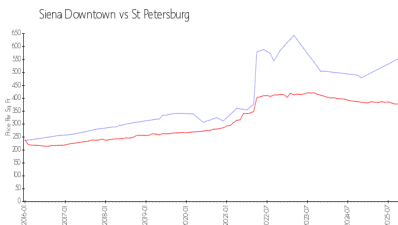
Building Information

Number of units:	50
Number of active listings for rent:	1
Number of active listings for sale:	4
Building inventory for sale:	8%
Number of sales over the last 12 months:	0
Number of sales over the last 6 months:	0
Number of sales over the last 3 months:	0
Siena Downtown Condominium	
210 6th Ave N, Apt 2	
Saint Petersburg, Florida 33701	
+1 727-822-6200	
https://	

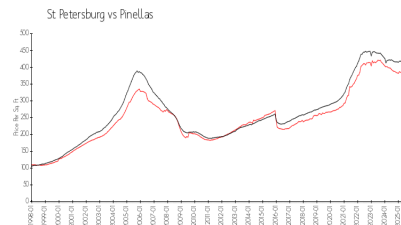


Built in 1961/1973 - 50 units - 2 floors

Market Information



Siena Downtown: \$559/sq. ft.
St Petersburg: \$376/sq. ft.



St Petersburg: \$376/sq. ft.
Pinellas: \$387/sq. ft.

Inventory for Sale

Siena Downtown	8%
St Petersburg	9%
Pinellas	8%

Avg. Time to Close Over Last 12 Months

Siena Downtown	78 days
St Petersburg	95 days
Pinellas	100 days