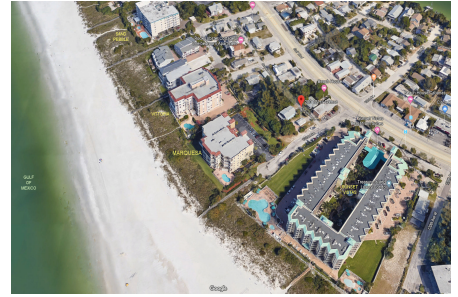


# Marquesa

200 121 Ave, Treasure Island, FL, Pinellas 33706

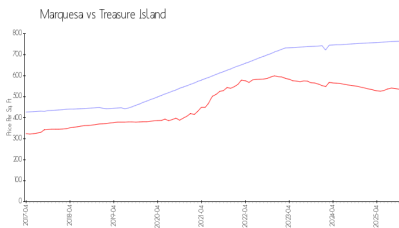
## Building Information

Number of units: 17  
Number of active listings for rent: 0  
Number of active listings for sale: 2  
Building inventory for sale: 11%  
Number of sales over the last 12 months: 0  
Number of sales over the last 6 months: 0  
Number of sales over the last 3 months: 0  
Marquesa Condominium Association  
Address 200 121st Ave  
Treasure Island, Florida 33706  
Phone +1 727-363-4831  
<https://>

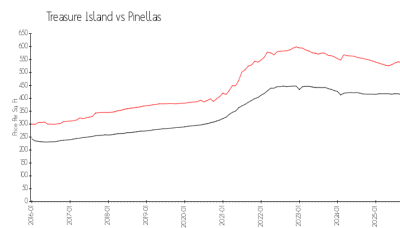


Built in 2000 - 38 units - 4 floors

## Market Information



Marquesa: \$765/sq. ft.  
Treasure Island: \$536/sq. ft.



Treasure Island: \$536/sq. ft.  
Pinellas: \$387/sq. ft.

## Inventory for Sale

Marquesa 11%  
Treasure Island 8%  
Pinellas 8%

## Avg. Time to Close Over Last 12 Months

Marquesa 10 days  
Treasure Island 96 days  
Pinellas 100 days