

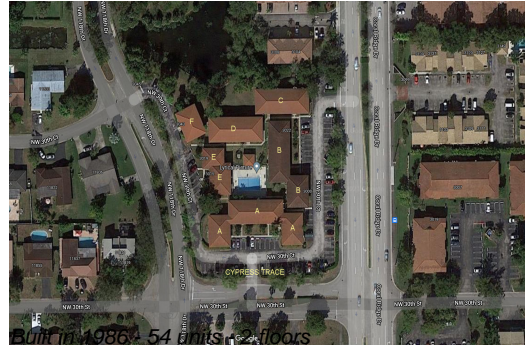
Unit 3006 Coral Ridge Dr # 210B - Cypress Trace

3006 Coral Ridge Dr # 210B - 11767-11797 NW 30 St, Coral Springs, FL, Broward 33065

Unit Information

MLS Number:	F10436109
Status:	Pending
Size:	800 Sq ft.
Bedrooms:	2
Full Bathrooms:	2
Half Bathrooms:	0
Parking Spaces:	1 Space, Guest Parking
View:	Other View
List Price:	\$199,900
List PPSF:	\$250
Valuated Price:	\$190,000
Valuated PPSF:	\$238

The above valuated price is a baseline figure that does not take into account any specific renovation, upgrade, split, merge, or deterioration of the unit.



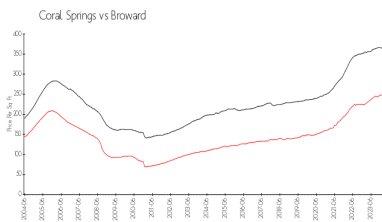
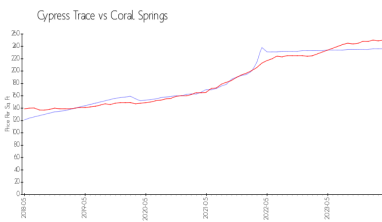
Building Information

Number of units:	54
Number of active listings for rent:	0
Number of active listings for sale:	0
Building inventory for sale:	0%
Number of sales over the last 12 months:	0
Number of sales over the last 6 months:	0
Number of sales over the last 3 months:	0

Building Association Information

Cypress Creek Villas Of Coral Springs Condominium Association, Inc.
 9365 W Sample Rd,
 Coral Springs, FL 33065

Market Information



Cypress Trace:	\$236/sq. ft.	Coral Springs:	\$250/sq. ft.
Coral Springs:	\$250/sq. ft.	Broward:	\$351/sq. ft.

Inventory for Sale

Cypress Trace	0%
Coral Springs	2%
Broward	4%

Avg. Time to Close Over Last 12 Months

Cypress Trace	52 days
Coral Springs	45 days
Broward	67 days