

# Unit 2450 SE 14th Ct - Palm Breeze at Keys Gate

2450 SE 14th Ct - 1460-1495 SE 25 Ter, Homestead, FL, Miami-Dade 33035

## Unit Information

MLS Number: A11854863  
 Status: Active  
 Size: 1,952 Sq ft.  
 Bedrooms: 4  
 Full Bathrooms: 3  
 Half Bathrooms: 0  
 Parking Spaces: 2 Or More Spaces  
 View:  
 List Price: \$465,999  
 List PPSF: \$239  
 Valuated Price: \$363,000  
 Valuated PPSF: \$186

*The above valuated price is a baseline figure that does not take into account any specific renovation, upgrade, split, merge, or deterioration of the unit.*

## Building Information

Number of units: 403  
 Number of active listings for rent: 0  
 Number of active listings for sale: 10  
 Building inventory for sale: 2%  
 Number of sales over the last 12 months: 45  
 Number of sales over the last 6 months: 20  
 Number of sales over the last 3 months: 12

## Building Association Information

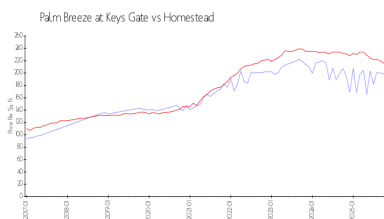
Palm Breeze at Keys Gate  
 Address: 1427 SE 24th Rd,  
 Homestead, FL 33035,  
 Phone: +1 786-349-1000

<https://keysgatehometown.com/>

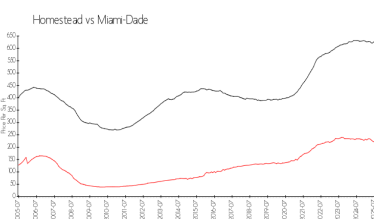
## Recent Sales

Unit #	Size	Closing Date	Sale Price	PPSF
1491	1,731 sq ft	Dec 2025	\$374,900	\$217
	1,732 sq ft	Dec 2025	\$340,000	\$196
	1,704 sq ft	Dec 2025	\$369,900	\$217
	1,965 sq ft	Nov 2025	\$275,000	\$140
	1,952 sq ft	Nov 2025	\$430,000	\$220

## Market Information



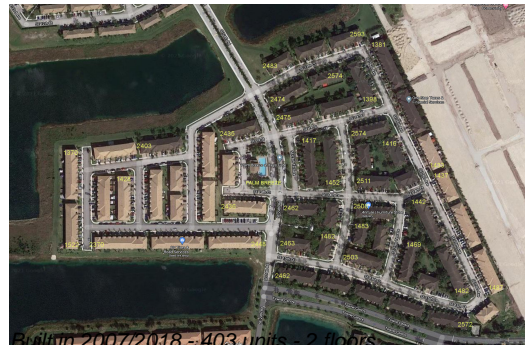
Palm Breeze at Keys Gate: \$186/sq. ft.  
 Homestead: \$215/sq. ft.



Homestead: \$215/sq. ft.  
 Miami-Dade: \$671/sq. ft.

## Inventory for Sale

Palm Breeze at Keys Gate: 2%  
 Homestead: 4%



Miami-Dade	4%
------------	----

**Avg. Time to Close Over Last 12 Months**

Palm Breeze at Keys Gate	69 days
Homestead	69 days
Miami-Dade	77 days