

Unit 2050 N Congress Ave # 209 - Presidential Golfview

2050 N Congress Ave # 209 - 1700 N Congress Ave, West Palm Beach, FL, Palm Beach 33401

Unit Information

MLS Number:	A11739465
Status:	Active
Size:	1,030 Sq ft.
Bedrooms:	2
Full Bathrooms:	2
Half Bathrooms:	0
Parking Spaces:	2 Or More Spaces,Guest Parking
View:	
List Price:	\$180,000
List PPSF:	\$175
Valuated Price:	\$168,000
Valuated PPSF:	\$163

The above valuated price is a baseline figure that does not take into account any specific renovation, upgrade, split, merge, or deterioration of the unit.

Building Information

Number of units:	436
Number of active listings for rent:	0
Number of active listings for sale:	19
Building inventory for sale:	4%
Number of sales over the last 12 months:	5
Number of sales over the last 6 months:	3
Number of sales over the last 3 months:	2

Building Association Information

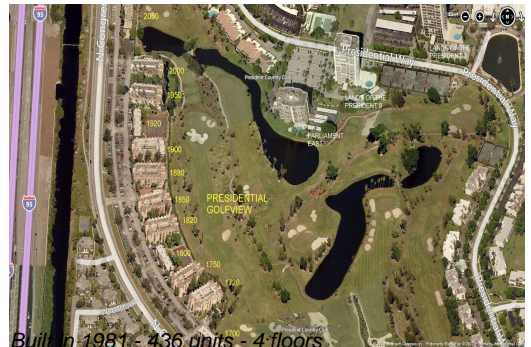
Presidential Golfview Condo
West Palm Beach, FL 33401
1700 N Congress Ave Apt A,
(561) 684-7725
1720 N Congress Ave Apt A,
(561) 471-0981
1750 N Congress Ave,
(561) 688-0892
1820 N Congress Ave Apt A,
(561) 686-6342
1850 N Congress Ave,
(561) 686-1077
1860 N Congress Ave
(561) 686-4948
1900 S Congress Ave Ste A,
(561) 683-7512
2000 N Congress Ave # A,
(561) 684-1531

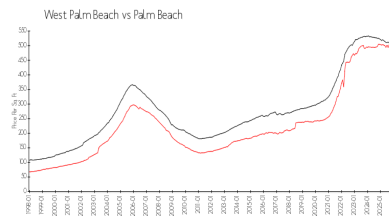
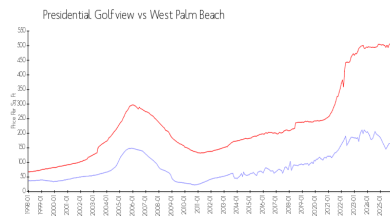
<https://>

Recent Sales

Unit #	Size	Closing Date	Sale Price	PPSF
302	775 sq ft	Nov 2025	\$122,000	\$157
403	775 sq ft	Oct 2025	\$130,000	\$168
409	775 sq ft	Jun 2025	\$110,000	\$142
404	775 sq ft	Jun 2025	\$120,000	\$155
102	775 sq ft	May 2025	\$125,000	\$161

Market Information





Presidential	\$164/sq. ft.	West Palm Beach:	\$506/sq. ft.
Golfview:		Palm Beach:	\$453/sq. ft.
West Palm Beach:	\$506/sq. ft.		

Inventory for Sale

Presidential Golfview	4%
West Palm Beach	3%
Palm Beach	3%

Avg. Time to Close Over Last 12 Months

Presidential Golfview	42 days
West Palm Beach	69 days
Palm Beach	77 days