

Unit 415 Executive Center Dr # 203 - Clear Lake Palms

415 Executive Center Dr # 203 - 405 Executive Center Dr, West Palm Beach, FL, Palm Beach 33401

Unit Information

MLS Number: A11865990
 Status: Active
 Size: 925 Sq ft.
 Bedrooms: 2
 Full Bathrooms: 2
 Half Bathrooms: 0
 Parking Spaces: 2 Or More Spaces
 View:
 List Price: \$205,000
 List PPSF: \$222
 Valuated Price: \$136,000
 Valuated PPSF: \$143

The above valuated price is a baseline figure that does not take into account any specific renovation, upgrade, split, merge, or deterioration of the unit.

Building Information

Number of units: 312
 Number of active listings for rent: 0
 Number of active listings for sale: 4
 Building inventory for sale: 1%
 Number of sales over the last 12 months: 1
 Number of sales over the last 6 months: 0
 Number of sales over the last 3 months: 0

Building Association Information

Clear Lake Palms
 Condominium Association, Inc
 401 Executive Center Dr
 West Palm Beach, FL 33401
 Phone: (561) 478-0655

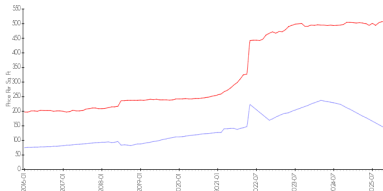
<https://>

Recent Sales

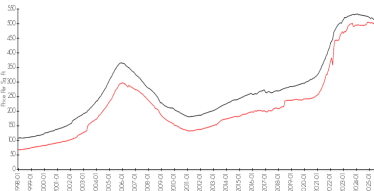
Unit #	Size	Closing Date	Sale Price	PPSF
107	949 sq ft	Dec 2024	\$169,000	\$178

Market Information

Clear Lake Palms vs West Palm Beach



West Palm Beach vs Palm Beach



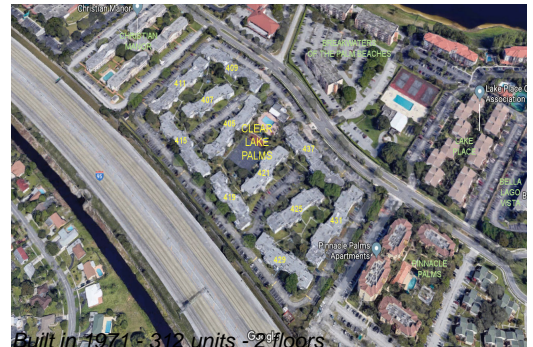
Clear Lake Palms: \$142/sq. ft.
 West Palm Beach: \$506/sq. ft.

West Palm Beach: \$506/sq. ft.
 Palm Beach: \$453/sq. ft.

Inventory for Sale

Clear Lake Palms 1%
 West Palm Beach 3%
 Palm Beach 3%

Avg. Time to Close Over Last 12 Months



Clear Lake Palms	48 days
West Palm Beach	69 days
Palm Beach	77 days