

Unit 1-622 - Flagler Pointe

1-622 - 1805 N Flagler Drive, West Palm Beach, FL, Palm Beach 33407

Unit Information

MLS Number:	A11899810
Status:	Active
Size:	1,071 Sq ft.
Bedrooms:	2
Full Bathrooms:	2
Half Bathrooms:	0
Parking Spaces:	Assigned Parking
View:	
List Price:	\$400,000
List PPSF:	\$373
Valuated Price:	\$359,000
Valuated PPSF:	\$335

The above valuated price is a baseline figure that does not take into account any specific renovation, upgrade, split, merge, or deterioration of the unit.

Building Information

Number of units:	400
Number of active listings for rent:	27
Number of active listings for sale:	17
Building inventory for sale:	4%
Number of sales over the last 12 months:	30
Number of sales over the last 6 months:	10
Number of sales over the last 3 months:	5

Building Association Information

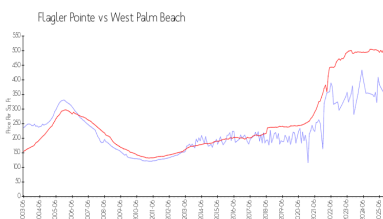
Flagler Pointe Condominium Association of
West Palm Beach, Inc
c/o Castle Management, LLC
1801 North Flagler Drive
West Palm Beach, FL 33407
Phone: (561) 822-9970
Concierge: (561) 833-7024

<https://flaglerpointe.us/Management-Contacts~301897~20085.htm>

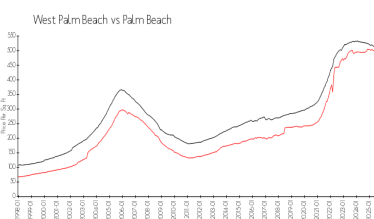
Recent Sales

Unit #	Size	Closing Date	Sale Price	PPSF
729	1,071 sq ft	Nov 2025	\$490,000	\$458
931	778 sq ft	Oct 2025	\$290,000	\$373
526	995 sq ft	Oct 2025	\$300,000	\$302
840	1,334 sq ft	Sep 2025	\$650,000	\$487
705	662 sq ft	Aug 2025	\$245,000	\$370
214	995 sq ft	Aug 2025	\$290,000	\$291

Market Information



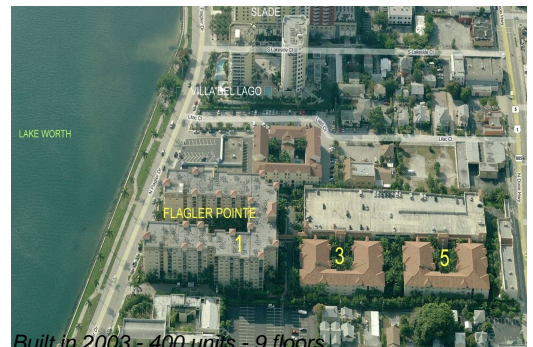
Flagler Pointe: \$426/sq. ft.
West Palm Beach: \$506/sq. ft.



West Palm Beach: \$506/sq. ft.
Palm Beach: \$453/sq. ft.

Inventory for Sale

Flagler Pointe 4%



West Palm Beach	3%
Palm Beach	3%

Avg. Time to Close Over Last 12 Months

Flagler Pointe	75 days
West Palm Beach	69 days
Palm Beach	77 days