

Unit 22102 Glenmoor Dr - Sterling Villages of Palm Beach Lakes

22102 Glenmoor Dr - 1101-22304 Glenmoor Dr, West Palm Beach, FL, Palm Beach 33409

Unit Information

| | |
|-----------------|-----------------------|
| MLS Number: | A11917460 |
| Status: | Active |
| Size: | 850 Sq ft. |
| Bedrooms: | 1 |
| Full Bathrooms: | 1 |
| Half Bathrooms: | 0 |
| Parking Spaces: | 1 Space,Guest Parking |
| View: | |
| List Price: | \$185,000 |
| List PPSF: | \$218 |
| Valuated Price: | \$172,000 |
| Valuated PPSF: | \$202 |

The above valuated price is a baseline figure that does not take into account any specific renovation, upgrade, split, merge, or deterioration of the unit.

Building Information

| | |
|--|-----|
| Number of units: | 319 |
| Number of active listings for rent: | 0 |
| Number of active listings for sale: | 2 |
| Building inventory for sale: | 0% |
| Number of sales over the last 12 months: | 12 |
| Number of sales over the last 6 months: | 5 |
| Number of sales over the last 3 months: | 4 |

Building Association Information

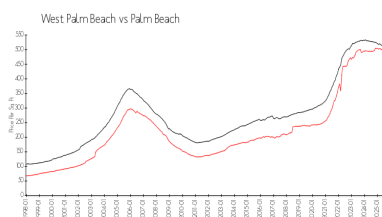
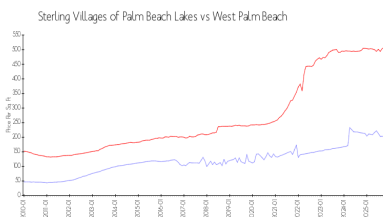
Sterling Villages-Palm Beach
Address: 1100 Village Blvd,
West Palm Beach, FL 33409,
Phone: +1 561-471-9292

<https://www.thesterlingwpb.com/>

Recent Sales

| Unit # | Size | Closing Date | Sale Price | PPSF |
|--------|-------------|--------------|------------|-------|
| 0 | 750 sq ft | Nov 2025 | \$170,000 | \$227 |
| 16104 | 850 sq ft | Oct 2025 | \$175,000 | \$206 |
| | 750 sq ft | Oct 2025 | \$175,000 | \$233 |
| | 1,120 sq ft | Oct 2025 | \$210,000 | \$188 |
| | 980 sq ft | Aug 2025 | \$200,000 | \$204 |

Market Information

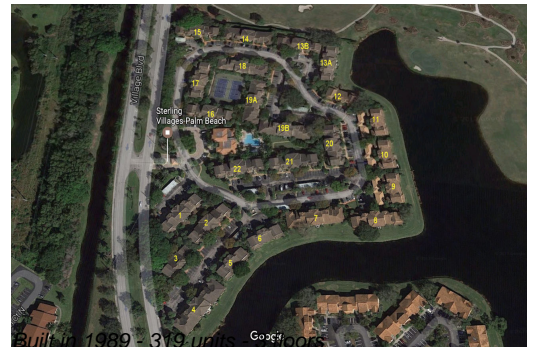


Sterling Villages of
Palm Beach Lakes: \$203/sq. ft.
West Palm Beach: \$506/sq. ft.

West Palm Beach: \$506/sq. ft.
Palm Beach: \$453/sq. ft.

Inventory for Sale

Sterling Villages of Palm Beach Lakes 1%



| | |
|-----------------|----|
| West Palm Beach | 3% |
| Palm Beach | 3% |

Avg. Time to Close Over Last 12 Months

| | |
|---------------------------------------|---------|
| Sterling Villages of Palm Beach Lakes | 60 days |
| West Palm Beach | 69 days |
| Palm Beach | 77 days |