

Unit 429 Executive Center Dr # 211 - Clear Lake Palms

429 Executive Center Dr # 211 - 405 Executive Center Dr, West Palm Beach, FL, Palm Beach 33401

Unit Information

MLS Number:	F10509348
Status:	Active
Size:	1,086 Sq ft.
Bedrooms:	1
Full Bathrooms:	1
Half Bathrooms:	0
Parking Spaces:	1 Space,Guest Parking
View:	
List Price:	\$130,000
List PPSF:	\$120
Valuated Price:	\$155,000
Valuated PPSF:	\$143

The above valuated price is a baseline figure that does not take into account any specific renovation, upgrade, split, merge, or deterioration of the unit.

Building Information

Number of units:	312
Number of active listings for rent:	0
Number of active listings for sale:	4
Building inventory for sale:	1%
Number of sales over the last 12 months:	1
Number of sales over the last 6 months:	0
Number of sales over the last 3 months:	0

Building Association Information

Clear Lake Palms
Condominium Association, Inc
401 Executive Center Dr
West Palm Beach, FL 33401
Phone: (561) 478-0655

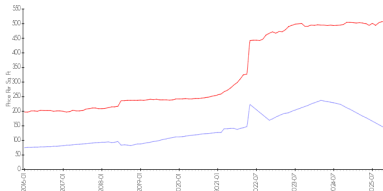
<https://>

Recent Sales

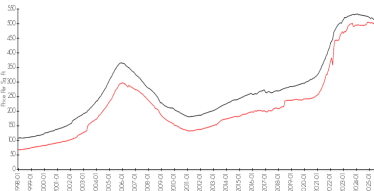
Unit #	Size	Closing Date	Sale Price	PPSF
107	949 sq ft	Dec 2024	\$169,000	\$178

Market Information

Clear Lake Palms vs West Palm Beach



West Palm Beach vs Palm Beach



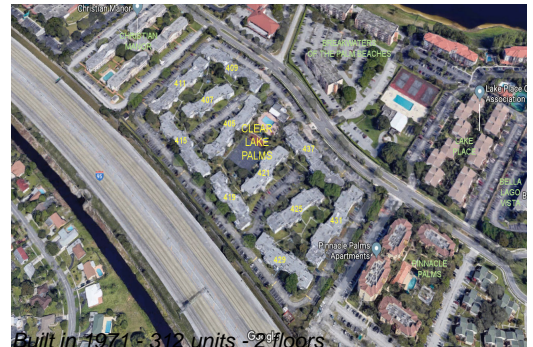
Clear Lake Palms: \$142/sq. ft.
West Palm Beach: \$506/sq. ft.

West Palm Beach: \$506/sq. ft.
Palm Beach: \$453/sq. ft.

Inventory for Sale

Clear Lake Palms	1%
West Palm Beach	3%
Palm Beach	3%

Avg. Time to Close Over Last 12 Months



Clear Lake Palms	48 days
West Palm Beach	69 days
Palm Beach	77 days