

Unit 508 - Mayan Towers North

508 - 145 S Ocean Ave, Palm Beach Shores, FL, Palm Beach 33404

Unit Information

MLS Number: RX-10938692
 Status: Active
 Size: 1,047 Sq ft.
 Bedrooms: 2
 Full Bathrooms: 2
 Half Bathrooms: 0
 Parking Spaces: Assigned,Covered
 View: City,Ocean
 Rental Price: \$5,000
 List PPSF: \$5
 Valuated Price: \$469,000
 Valuated PPSF: \$448

The above valuated price is a baseline figure that does not take into account any specific renovation, upgrade, split, merge, or deterioration of the unit.

Building Information

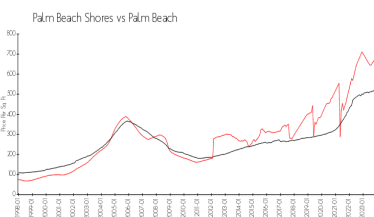
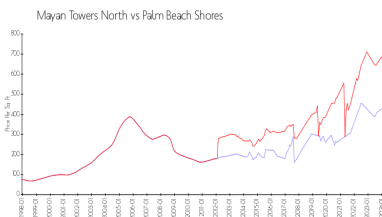
Number of units: 140
 Number of active listings for rent: 0
 Number of active listings for sale: 1
 Building inventory for sale: 0%
 Number of sales over the last 12 months: 3
 Number of sales over the last 6 months: 0
 Number of sales over the last 3 months: 0

Building Association Information

Mayan Towers North
 CONTACT INFO
 145 S. Ocean Avenue
 Palm Beach Shores, FL 33404
 Email: MayanTowersNorth@bellsouth.net
 Office Phone: 561.848.2306
 Office Fax: 561.848.2729

<http://mayantowersnorth.com/condo/>

Market Information



Mayan Towers North: \$437/sq. ft.
 Palm Beach Shores: \$710/sq. ft.

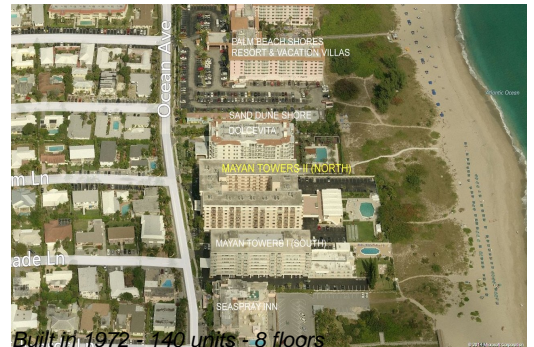
Palm Beach Shores: \$710/sq. ft.
 Palm Beach: \$475/sq. ft.

Inventory for Sale

Mayan Towers North: 1%
 Palm Beach Shores: 2%
 Palm Beach: 3%

Avg. Time to Close Over Last 12 Months

Mayan Towers North: 161 days
 Palm Beach Shores: 98 days



Palm Beach

56 days