

# Unit 405 Executive Center Dr # 208 - Clear Lake Palms

405 Executive Center Dr # 208 - 405 Executive Center Dr, West Palm Beach, FL, Palm Beach 33401

## Unit Information

MLS Number:	RX-11097275
Status:	Active
Size:	925 Sq ft.
Bedrooms:	2
Full Bathrooms:	2
Half Bathrooms:	0
Parking Spaces:	
View:	
List Price:	\$198,000
List PPSF:	\$214
Valuated Price:	\$136,000
Valuated PPSF:	\$143

*The above valuated price is a baseline figure that does not take into account any specific renovation, upgrade, split, merge, or deterioration of the unit.*

## Building Information

Number of units:	312
Number of active listings for rent:	0
Number of active listings for sale:	4
Building inventory for sale:	1%
Number of sales over the last 12 months:	1
Number of sales over the last 6 months:	0
Number of sales over the last 3 months:	0

## Building Association Information

Clear Lake Palms  
Condominium Association, Inc  
401 Executive Center Dr  
West Palm Beach, FL 33401  
Phone: (561) 478-0655

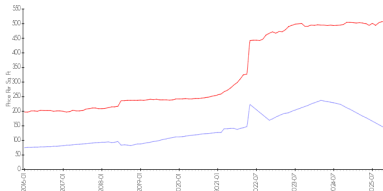
<https://>

## Recent Sales

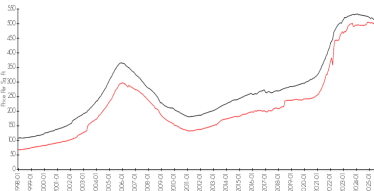
Unit #	Size	Closing Date	Sale Price	PPSF
107	949 sq ft	Dec 2024	\$169,000	\$178

## Market Information

Clear Lake Palms vs West Palm Beach



West Palm Beach vs Palm Beach



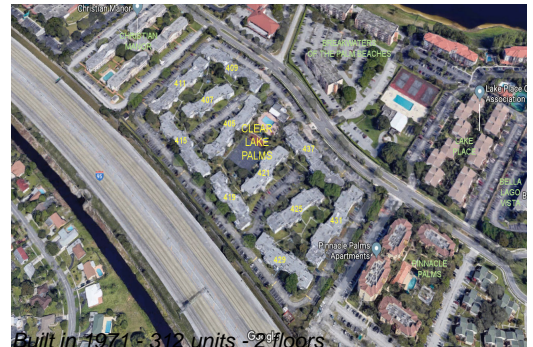
Clear Lake Palms: \$142/sq. ft.  
West Palm Beach: \$506/sq. ft.

West Palm Beach: \$506/sq. ft.  
Palm Beach: \$453/sq. ft.

## Inventory for Sale

Clear Lake Palms	1%
West Palm Beach	3%
Palm Beach	3%

## Avg. Time to Close Over Last 12 Months



Clear Lake Palms	48 days
West Palm Beach	69 days
Palm Beach	77 days