

# Unit PH 08 - Slade

PH 08 - 1551 N Flagler Dr, West Palm Beach, FL, Palm Beach 33401

## Unit Information

MLS Number:	RX-11134967
Status:	Active
Size:	760 Sq ft.
Bedrooms:	1
Full Bathrooms:	1
Half Bathrooms:	0
Parking Spaces:	Assigned,Covered,Garage - Building
View:	City,Intracoastal
List Price:	\$398,490
List PPSF:	\$524
Valuated Price:	\$300,000
Valuated PPSF:	\$395

*The above valuated price is a baseline figure that does not take into account any specific renovation, upgrade, split, merge, or deterioration of the unit.*

## Building Information

Number of units:	199
Number of active listings for rent:	10
Number of active listings for sale:	13
Building inventory for sale:	6%
Number of sales over the last 12 months:	5
Number of sales over the last 6 months:	3
Number of sales over the last 3 months:	2

## Building Association Information

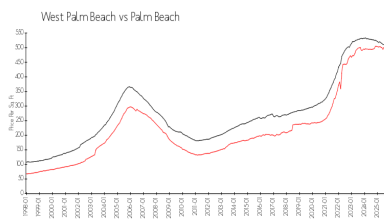
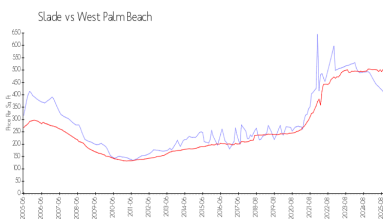
The Slade Condo Association  
561-653-8230

<https://>

## Recent Sales

Unit #	Size	Closing Date	Sale Price	PPSF
1403	1,175 sq ft	Nov 2025	\$450,000	\$383
1210	760 sq ft	Oct 2025	\$270,000	\$355
1509	760 sq ft	Sep 2025	\$260,000	\$342
712	933 sq ft	Mar 2025	\$395,000	\$423
1011	1,625 sq ft	Feb 2025	\$925,000	\$569

## Market Information



Slade: \$401/sq. ft.  
West Palm Beach: \$506/sq. ft.

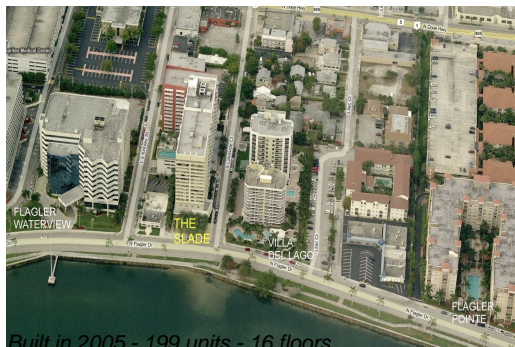
West Palm Beach: \$506/sq. ft.  
Palm Beach: \$453/sq. ft.

## Inventory for Sale

Slade	7%
West Palm Beach	3%
Palm Beach	3%

## Avg. Time to Close Over Last 12 Months

Slade	100 days
-------	----------



West Palm Beach  
Palm Beach

69 days  
77 days