

# Unit 58 - Magnolia & Annex

58 - 303-351 Flamingo Dr, West Palm Beach, FL, Palm Beach 33401

## Unit Information

MLS Number:	RX-11142272
Status:	Active
Size:	1,826 Sq ft.
Bedrooms:	3
Full Bathrooms:	3
Half Bathrooms:	1
Parking Spaces:	2+ Spaces,Garage - Attached
View:	Garden,Other
List Price:	\$1,395,000
List PPSF:	\$764
Valuated Price:	\$1,325,000
Valuated PPSF:	\$687

*The above valuated price is a baseline figure that does not take into account any specific renovation, upgrade, split, merge, or deterioration of the unit.*

## Building Information

Number of units:	70
Number of active listings for rent:	1
Number of active listings for sale:	2
Building inventory for sale:	2%
Number of sales over the last 12 months:	4
Number of sales over the last 6 months:	1
Number of sales over the last 3 months:	0

## Building Association Information

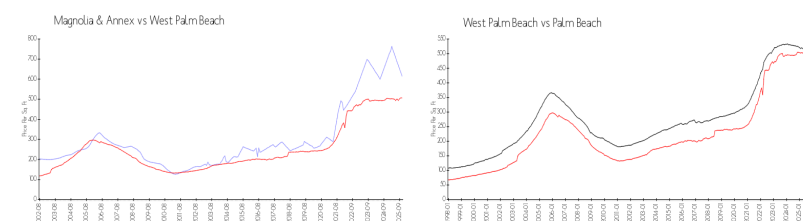
Magnolia Court Homeowners Association, Inc 2328 S Congress Avenue # 1  
West Palm Beach, FL33406  
(561) 355-4497  
The Annex Condominium Association is managed by King's Management Services, Inc.  
(561) 627-0480

<https://>

## Recent Sales

Unit #	Size	Closing Date	Sale Price	PPSF
	1,866 sq ft	Jul 2025	\$1,050,000	\$563
	1,826 sq ft	Mar 2025	\$1,520,000	\$832
	1,826 sq ft	Feb 2025	\$1,375,000	\$753
	1,839 sq ft	Feb 2025	\$1,340,000	\$729

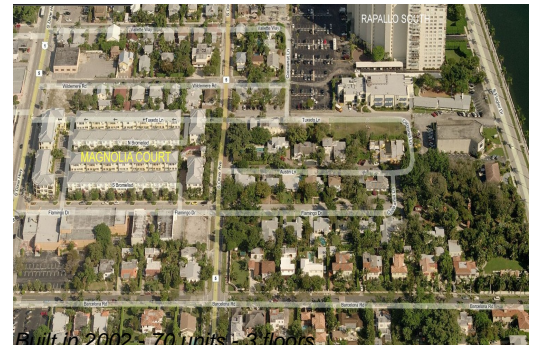
## Market Information



Magnolia & Annex:	\$613/sq. ft.	West Palm Beach:	\$506/sq. ft.
West Palm Beach:	\$506/sq. ft.	Palm Beach:	\$453/sq. ft.

## Inventory for Sale

Magnolia & Annex	3%
West Palm Beach	3%
Palm Beach	3%



**Avg. Time to Close Over Last 12 Months**

Magnolia & Annex	94 days
West Palm Beach	69 days
Palm Beach	77 days