

# Unit 37540 Daliha Ter - Eiland Park Townhomes

37540 Daliha Ter - 6246-6379 Timberly Ln, Zephyrhills, FL, Pasco 33542

## Unit Information

MLS Number:	T3476354
Status:	ACTIVE
Size:	1,363 Sq ft.
Bedrooms:	3
Full Bathrooms:	2
Half Bathrooms:	1
Parking Spaces:	
View:	
Rental Price:	\$1,975
List PPSF:	\$1
Valuated Price:	\$193,000
Valuated PPSF:	\$142

*The above valuated price is a baseline figure that does not take into account any specific renovation, upgrade, split, merge, or deterioration of the unit.*

## Building Information

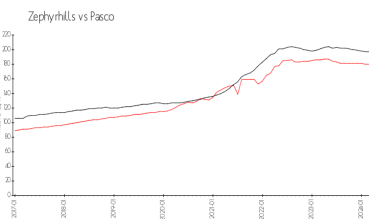
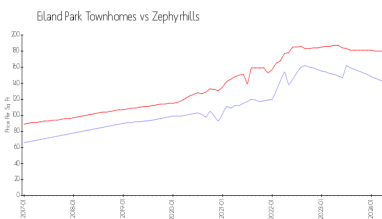
Number of units:	220
Number of active listings for rent:	0
Number of active listings for sale:	2
Building inventory for sale:	0%
Number of sales over the last 12 months:	5
Number of sales over the last 6 months:	1
Number of sales over the last 3 months:	0

## Building Association Information

EILAND PARK TOWNHOMES ASSOCIATION  
 Rizzetta & Company  
 5844 Old Pasco Rd - Ste. 100  
 Wesley Chapel, FL 33544  
 Phone 813-994-1001  
 Fax: 813-994-2100

<http://www.eilandparkhoa.com/eilandpark/>

## Market Information

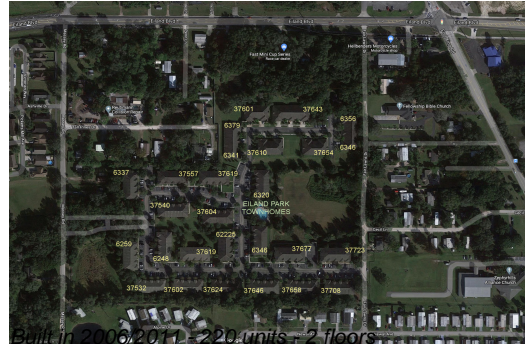


Eiland Park Townhomes:	\$142/sq. ft.	Zephyrhills:	\$180/sq. ft.
Zephyrhills:	\$180/sq. ft.	Pasco:	\$192/sq. ft.

## Inventory for Sale

Eiland Park Townhomes	1%
Zephyrhills	1%
Pasco	1%

## Avg. Time to Close Over Last 12 Months



Eiland Park Townhomes  
Zephyrhills  
Pasco

50 days  
43 days  
45 days