

Unit 442 - Bahia Vista II

442 - 6081 Bahia Del Mar Cir, St Petersburg, FL, Pinellas 33715

Unit Information

| | |
|-----------------|--------------|
| MLS Number: | TB8361677 |
| Status: | ACTIVE |
| Size: | 1,080 Sq ft. |
| Bedrooms: | 2 |
| Full Bathrooms: | 2 |
| Half Bathrooms: | 0 |
| Parking Spaces: | |
| View: | Water |
| List Price: | \$598,000 |
| List PPSF: | \$554 |
| Valuated Price: | \$519,000 |
| Valuated PPSF: | \$481 |

The above valuated price is a baseline figure that does not take into account any specific renovation, upgrade, split, merge, or deterioration of the unit.

Building Information

| | |
|--|-----|
| Number of units: | 160 |
| Number of active listings for rent: | 0 |
| Number of active listings for sale: | 14 |
| Building inventory for sale: | 8% |
| Number of sales over the last 12 months: | 9 |
| Number of sales over the last 6 months: | 7 |
| Number of sales over the last 3 months: | 3 |

Building Association Information

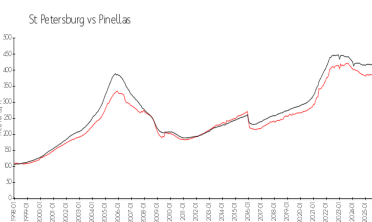
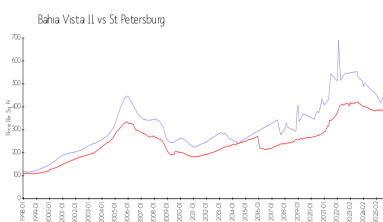
BAHIA VISTA, UNIT II, CONDOMINIUM ASSOCIATION, INC.
 5901 SUN BLVD
 SUITE 103
 SAINT PETERSBURG FL 33715
 Phone: 727-864-0004
 Fax: 727-866-7002

<https://>

Recent Sales

| Unit # | Size | Closing Date | Sale Price | PPSF |
|--------|-------------|--------------|------------|-------|
| 325 | 1,150 sq ft | Oct 2025 | \$530,000 | \$461 |
| 534 | 1,080 sq ft | Oct 2025 | \$425,887 | \$394 |
| 439 | 1,080 sq ft | Oct 2025 | \$487,500 | \$451 |
| 238 | 1,080 sq ft | Aug 2025 | \$435,000 | \$403 |
| 241 | 1,150 sq ft | Jul 2025 | \$478,000 | \$416 |

Market Information

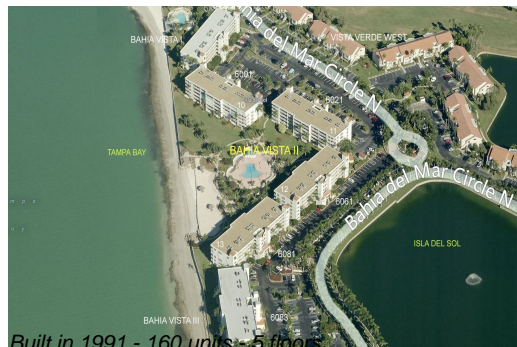


Bahia Vista II: \$475/sq. ft.
 St Petersburg: \$376/sq. ft.

St Petersburg: \$376/sq. ft.
 Pinellas: \$387/sq. ft.

Inventory for Sale

| | |
|----------------|----|
| Bahia Vista II | 9% |
| St Petersburg | 9% |
| Pinellas | 8% |



Built in 1991 - 160 units - 5 floors

Avg. Time to Close Over Last 12 Months

| | |
|----------------|----------|
| Bahia Vista II | 180 days |
| St Petersburg | 95 days |
| Pinellas | 100 days |