

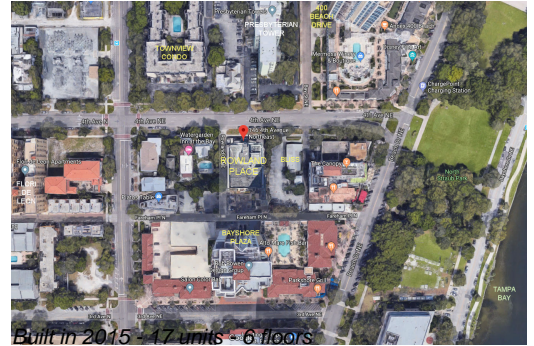
Unit 600 - Rowland Place

600 - 146 4 Ave NE, St Petersburg, FL, Pinellas 33701

Unit Information

MLS Number:	TB8362300
Status:	ACTIVE
Size:	7,457 Sq ft.
Bedrooms:	5
Full Bathrooms:	6
Half Bathrooms:	1
Parking Spaces:	Alley Access, Garage Door Opener, Ground Level, On Street, Oversized
View:	City, Water
List Price:	\$8,450,000
List PPSF:	\$1,133
Valuated Price:	\$6,338,000
Valuated PPSF:	\$850

The above valuated price is a baseline figure that does not take into account any specific renovation, upgrade, split, merge, or deterioration of the unit.



Building Information

Number of units:	17
Number of active listings for rent:	0
Number of active listings for sale:	1
Building inventory for sale:	5%
Number of sales over the last 12 months:	2
Number of sales over the last 6 months:	2
Number of sales over the last 3 months:	2

Building Association Information

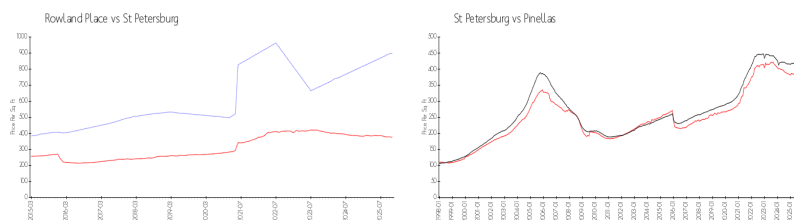
Rowland Place
146 4th Ave NE
Saint Petersburg, Florida 33701
+1 727-898-1180

<https://>

Recent Sales

Unit #	Size	Closing Date	Sale Price	PPSF
204	1,570 sq ft	Nov 2025	\$1,135,000	\$723
302	1,998 sq ft	Nov 2025	\$1,475,000	\$738

Market Information



Rowland Place:	\$898/sq. ft.	St Petersburg:	\$376/sq. ft.
St Petersburg:	\$376/sq. ft.	Pinellas:	\$387/sq. ft.

Inventory for Sale

Rowland Place	6%
St Petersburg	9%
Pinellas	8%

Avg. Time to Close Over Last 12 Months

Rowland Place	121 days
---------------	----------

St Petersburg
Pinellas

95 days
100 days