

Unit 225 49th Ave N - Sun Ketch Townhomes at Northeast

225 49th Ave N - 120-242 50 Ave N, St Petersburg, FL, Pinellas 33703

Unit Information

MLS Number: TB8402471
 Status: ACTIVE
 Size: 2,300 Sq ft.
 Bedrooms: 4
 Full Bathrooms: 3
 Half Bathrooms: 1
 Parking Spaces: Alley Access, Driveway, Garage Faces Rear, On Street
 View:
 List Price: \$638,000
 List PPSF: \$277
 Valuated Price: \$606,000
 Valuated PPSF: \$263

The above valuated price is a baseline figure that does not take into account any specific renovation, upgrade, split, merge, or deterioration of the unit.

Building Information

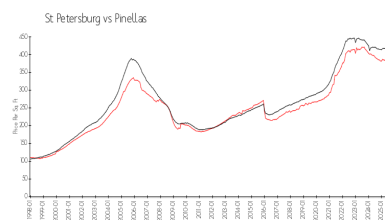
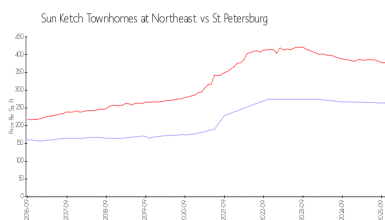
Number of units: 42
 Number of active listings for rent: 0
 Number of active listings for sale: 1
 Building inventory for sale: 2%
 Number of sales over the last 12 months: 0
 Number of sales over the last 6 months: 0
 Number of sales over the last 3 months: 0

Building Association Information

Sun Ketch Construction Inc
 Address: 2401 28th Ave N Suite A,
 St. Petersburg, Florida 33713
 Office: 727-592-0289
 Fax: 727-592-0299

<https://www.sunketch.com/communities/sk/NE.php>

Market Information



Sun Ketch Townhomes at Northeast: \$264/sq. ft.
 St Petersburg: \$376/sq. ft.

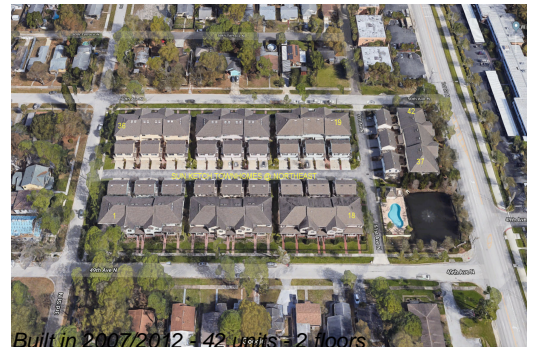
St Petersburg: \$376/sq. ft.
 Pinellas: \$385/sq. ft.

Inventory for Sale

Sun Ketch Townhomes at Northeast: 2%
 St Petersburg: 9%
 Pinellas: 8%

Avg. Time to Close Over Last 12 Months

Sun Ketch Townhomes at Northeast: n/a
 St Petersburg: 95 days



Built in 2007/2012 - 42 units - 2 floors

Pinellas

100 days