

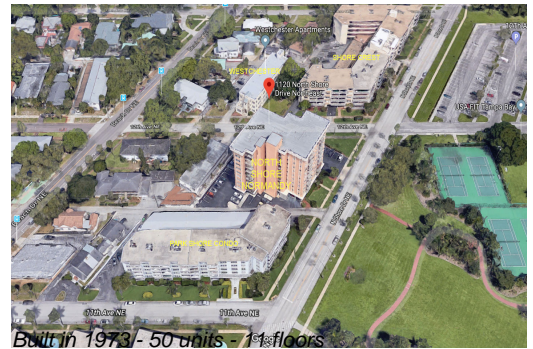
# Unit 503 - North Shore Normandy

503 - 1120 N Shore Dr NE, St Petersburg, FL, Pinellas 33701

## Unit Information

MLS Number:	TB8420041
Status:	ACTIVE
Size:	1,315 Sq ft.
Bedrooms:	2
Full Bathrooms:	2
Half Bathrooms:	0
Parking Spaces:	Assigned, Off Street
View:	City, Park/Greenbelt, Water
List Price:	\$435,000
List PPSF:	\$331
Valuated Price:	\$419,000
Valuated PPSF:	\$319

*The above valuated price is a baseline figure that does not take into account any specific renovation, upgrade, split, merge, or deterioration of the unit.*



## Building Information

Number of units:	50
Number of active listings for rent:	0
Number of active listings for sale:	5
Building inventory for sale:	10%
Number of sales over the last 12 months:	2
Number of sales over the last 6 months:	1
Number of sales over the last 3 months:	1

## Building Association Information

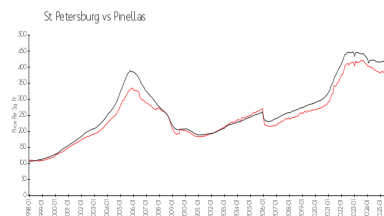
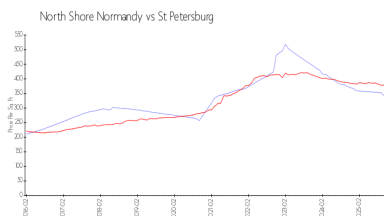
North Shore Normandy Assoc  
1120 N Shore Dr NE,  
Saint Petersburg, FL 33701  
(727) 894-3139

<https://>

## Recent Sales

Unit #	Size	Closing Date	Sale Price	PPSF
201	1,260 sq ft	Sep 2025	\$432,500	\$343
1004	1,335 sq ft	Feb 2025	\$480,000	\$360

## Market Information



North Shore Normandy:	\$334/sq. ft.	St Petersburg:	\$376/sq. ft.
St Petersburg:	\$376/sq. ft.	Pinellas:	\$387/sq. ft.

## Inventory for Sale

North Shore Normandy	10%
St Petersburg	9%
Pinellas	8%

## Avg. Time to Close Over Last 12 Months

North Shore Normandy	192 days
----------------------	----------

St Petersburg  
Pinellas

95 days  
100 days