

Unit 707 - Sage

707 - 400 4 Av S, St Petersburg, FL, Pinellas 33701

Unit Information

MLS Number: TB8434150
 Status: ACTIVE
 Size: 1,384 Sq ft.
 Bedrooms: 2
 Full Bathrooms: 2
 Half Bathrooms: 0
 Parking Spaces: Assigned
 View:
 List Price: \$724,900
 List PPSF: \$524
 Valuated Price: \$771,000
 Valuated PPSF: \$557

The above valuated price is a baseline figure that does not take into account any specific renovation, upgrade, split, merge, or deterioration of the unit.

Building Information

Number of units: 112
 Number of active listings for rent: 0
 Number of active listings for sale: 8
 Building inventory for sale: 7%
 Number of sales over the last 12 months: 5
 Number of sales over the last 6 months: 4
 Number of sales over the last 3 months: 3

Building Association Information

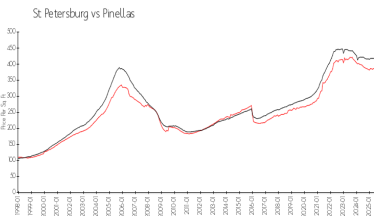
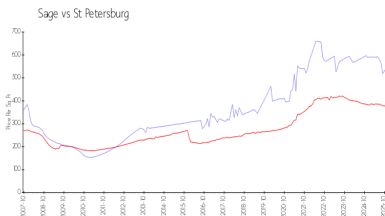
The Sage Condo Association
 400 4th Avenue S
 Saint Petersburg, FL 33701
 (727) 823-0176

<https://>

Recent Sales

Unit #	Size	Closing Date	Sale Price	PPSF
1001	1,260 sq ft	Oct 2025	\$705,000	\$560
309	1,234 sq ft	Sep 2025	\$520,000	\$421
704	1,384 sq ft	Sep 2025	\$715,000	\$517
506	1,378 sq ft	Jun 2025	\$755,000	\$548
602	1,493 sq ft	May 2025	\$840,000	\$563

Market Information

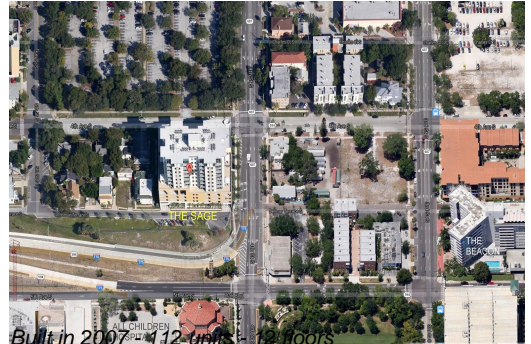


Sage:	\$540/sq. ft.	St Petersburg:	\$376/sq. ft.
St Petersburg:	\$376/sq. ft.	Pinellas:	\$387/sq. ft.

Inventory for Sale

Sage: 7%
 St Petersburg: 9%
 Pinellas: 8%

Avg. Time to Close Over Last 12 Months



Sage
St Petersburg
Pinellas

79 days
95 days
100 days