

# Unit 310 - Terrace Park of Five Towns 25 Princeton

310 - 6188 80 St N, St Petersburg, FL, Pinellas 33709

## Unit Information

MLS Number: TB8452211  
 Status: ACTIVE  
 Size: 1,345 Sq ft.  
 Bedrooms: 2  
 Full Bathrooms: 2  
 Half Bathrooms: 0  
 Parking Spaces:  
 View:  
 List Price: \$276,000  
 List PPSF: \$205  
 Valuated Price: \$222,000  
 Valuated PPSF: \$165

*The above valuated price is a baseline figure that does not take into account any specific renovation, upgrade, split, merge, or deterioration of the unit.*

## Building Information

Number of units: 44  
 Number of active listings for rent: 0  
 Number of active listings for sale: 2  
 Building inventory for sale: 4%  
 Number of sales over the last 12 months: 1  
 Number of sales over the last 6 months: 0  
 Number of sales over the last 3 months: 0

## Building Association Information

Terrace Park of Five Towns  
 Address: 5975 Terrace Park Dr N, St. Petersburg, FL 33709  
 Phone: +1 727-544-4205

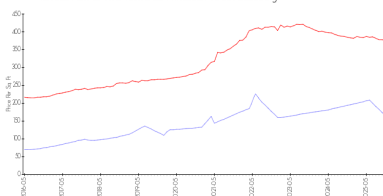
<https://fivetownstp.nabrnetwork.com/>

## Recent Sales

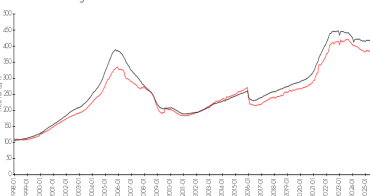
Unit #	Size	Closing Date	Sale Price	PPSF
402	1,345 sq ft	Jun 2025	\$285,000	\$212

## Market Information

Terrace Park of Five Towns 25 Princeton vs St.Petersburg



St.Petersburg vs Pinellas



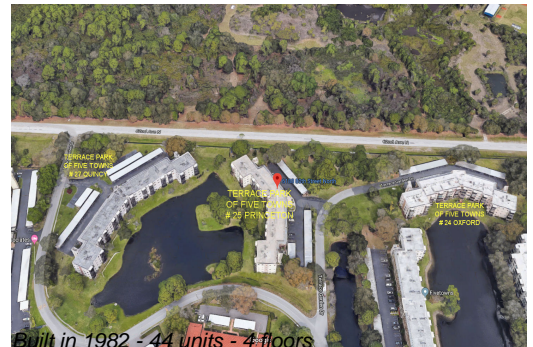
Terrace Park of Five Towns 25 Princeton:	\$165/sq. ft.	St Petersburg:	\$376/sq. ft.
St Petersburg:	\$376/sq. ft.	Pinellas:	\$387/sq. ft.

## Inventory for Sale

Terrace Park of Five Towns 25 Princeton	5%
St Petersburg	9%
Pinellas	8%

## Avg. Time to Close Over Last 12 Months

Terrace Park of Five Towns 25 Princeton	66 days
St Petersburg	95 days



Pinellas

100 days