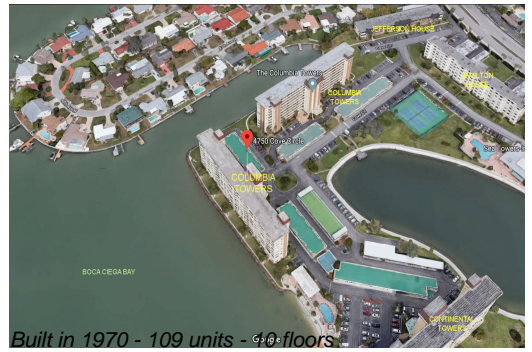


# Unit 1006 - Columbia Towers (Sea Towers)

1006 - 4725 Cove Cir, St Petersburg, FL, Pinellas 33708

## Unit Information

MLS Number: U8186727  
 Status: ACTIVE  
 Size: 485 Sq ft.  
 Bedrooms: 0  
 Full Bathrooms: 1  
 Half Bathrooms: 0  
 Parking Spaces: Assigned, Ground Level, Guest  
 View: Water  
 List Price: \$210,000  
 List PPSF: \$433



## Building Information

Number of units: 109  
 Number of active listings for rent: 0  
 Number of active listings for sale: 5  
 Building inventory for sale: 4%  
 Number of sales over the last 12 months: 13  
 Number of sales over the last 6 months: 6  
 Number of sales over the last 3 months: 3

## Building Association Information

Sea Towers  
 Seminole Blvd,  
 St. Petersburg, FL 33708,  
 (727) 397-1164 seatowers@tampabay.rr.com

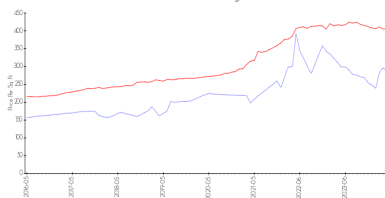
<http://www.seatowerscondos.com/seatowers/home.asp>

## Recent Sales

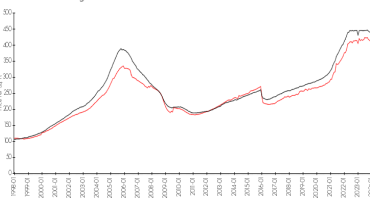
Unit #	Size	Closing Date	Sale Price	PPSF
801	1,040 sq ft	Apr 2024	\$315,000	\$303
201	1,040 sq ft	Mar 2024	\$250,000	\$240
601	1,040 sq ft	Mar 2024	\$332,000	\$319
903	1,045 sq ft	Feb 2024	\$349,000	\$334
905	815 sq ft	Jan 2024	\$205,000	\$252

## Market Information

Columbia Towers (Sea Towers) vs St Petersburg



St Petersburg vs Pinellas



Columbia Towers (Sea Towers): \$287/sq. ft.  
 St Petersburg: \$406/sq. ft.

St Petersburg: \$406/sq. ft.  
 Pinellas: \$423/sq. ft.

## Inventory for Sale

Columbia Towers (Sea Towers) 5%  
 St Petersburg 3%  
 Pinellas 3%

## Avg. Time to Close Over Last 12 Months

Columbia Towers (Sea Towers)	89 days
St Petersburg	68 days
Pinellas	64 days